

Datasheet for ABIN2791875
anti-PRPF38B antibody (Middle Region)[Go to Product page](#)

1 Image

Overview

Quantity:	100 µL
Target:	PRPF38B
Binding Specificity:	Middle Region
Reactivity:	Human, Mouse, Rat, Cow, Guinea Pig, Horse, Zebrafish (Danio rerio), Dog, Rabbit
Host:	Rabbit
Clonality:	Polyclonal
Conjugate:	This PRPF38B antibody is un-conjugated
Application:	Western Blotting (WB)

Product Details

Immunogen:	The immunogen is a synthetic peptide directed towards the middle region of Human PRPF38B
Sequence:	VQLYELKTYH EVVDEIYFKV THVEPWEEKGS RKTAGQTGMC GGVRGVGTGG
Predicted Reactivity:	Cow: 100%, Dog: 100%, Guinea Pig: 100%, Horse: 100%, Human: 100%, Mouse: 100%, Rabbit: 100%, Rat: 100%, Zebrafish: 100%
Characteristics:	This is a rabbit polyclonal antibody against PRPF38B. It was validated on Western Blot.
Purification:	Affinity Purified

Target Details

Target:	PRPF38B
Alternative Name:	PRPF38B (PRPF38B Products)

Target Details

Background: PRPF38B may be required for pre-mRNA splicing.
Protein Interaction Partner: UBC, MPG, YWHAG, USP33,
Protein Size: 190

Molecular Weight: 20 kDa

Gene ID: 55119

Application Details

Application Notes: Optimal working dilution should be determined by the investigator.

Restrictions: For Research Use only

Handling

Format: Liquid

Concentration: 1 mg/mL

Buffer: Liquid. Purified antibody supplied in 1x PBS buffer with 0.09 % (w/v) sodium azide and 2 % sucrose.

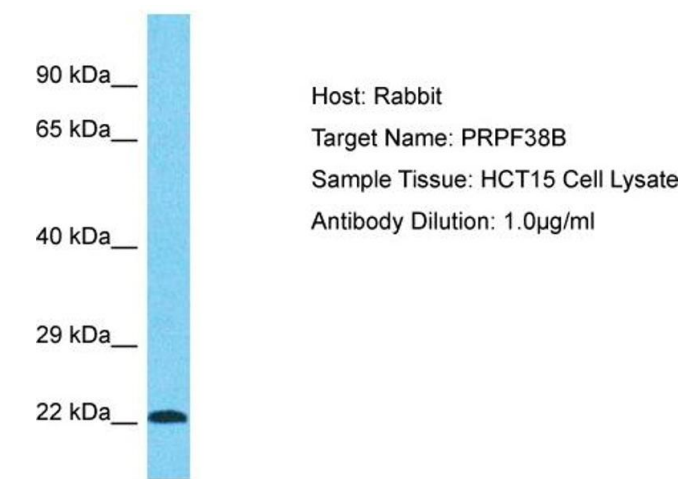
Preservative: Sodium azide

Precaution of Use: This product contains Sodium azide: a POISONOUS AND HAZARDOUS SUBSTANCE which should be handled by trained staff only.

Handling Advice: Avoid repeat freeze-thaw cycles.

Storage: -20 °C

Storage Comment: For short term use, store at 2-8°C up to 1 week. For long term storage, store at -20°C in small aliquots to prevent freeze-thaw cycles.



Western Blotting

Image 1. Host: Rabbit Target Name: PRPF38B Sample Type: HCT15 Whole Cell lysates Antibody Dilution: 1.0ug/ml