

Datasheet for ABIN2791878
anti-PRSS36 antibody (N-Term)[Go to Product page](#)

1 Image

Overview

Quantity:	100 µL
Target:	PRSS36
Binding Specificity:	N-Term
Reactivity:	Human, Mouse, Rabbit, Rat, Saccharomyces cerevisiae, Cow, Dog, Guinea Pig, Horse
Host:	Rabbit
Clonality:	Polyclonal
Conjugate:	This PRSS36 antibody is un-conjugated
Application:	Western Blotting (WB)

Product Details

Immunogen:	The immunogen is a synthetic peptide directed towards the N-terminal region of Human PRSS36
Sequence:	HLLLPLVMLV ISPIGAFQD SALSPTQEEP EDLDCGRPEP SARIVGGSNA
Predicted Reactivity:	Cow: 100%, Dog: 93%, Guinea Pig: 83%, Horse: 100%, Human: 100%, Mouse: 86%, Rabbit: 85%, Rat: 85%, Yeast: 89%
Characteristics:	This is a rabbit polyclonal antibody against PRSS36. It was validated on Western Blot.
Purification:	Affinity Purified

Target Details

Target:	PRSS36
---------	--------

Target Details

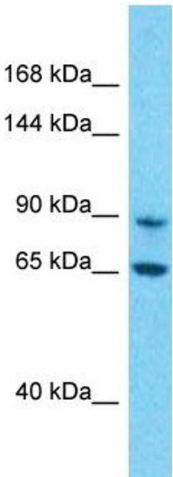
Alternative Name:	PRSS36 (PRSS36 Products)
Background:	<p>PRSS36 is a Serine protease. It hydrolyzes the peptides N-t-Boc-Gln- Ala-Arg-AMC and N-t-Boc-Gln-Gly-Arg-AMC and, to a lesser extent, N-t-Boc-Ala-Phe-Lys-AMC and N-t-Boc-Val-Leu-Lys-AMC. It has a preference for substrates with an Arg instead of a Lys residue in position P1.</p> <p>Alias Symbols: -</p> <p>Protein Size: 855</p>
Molecular Weight:	94 kDa
Gene ID:	146547
NCBI Accession:	NM_173502 , NP_775773
UniProt:	Q5K4E3

Application Details

Application Notes:	Optimal working dilution should be determined by the investigator.
Restrictions:	For Research Use only

Handling

Format:	Liquid
Concentration:	1 mg/mL
Buffer:	Liquid. Purified antibody supplied in 1x PBS buffer with 0.09 % (w/v) sodium azide and 2 % sucrose.
Preservative:	Sodium azide
Precaution of Use:	This product contains Sodium azide: a POISONOUS AND HAZARDOUS SUBSTANCE which should be handled by trained staff only.
Handling Advice:	Avoid repeat freeze-thaw cycles.
Storage:	-20 °C
Storage Comment:	For short term use, store at 2-8°C up to 1 week. For long term storage, store at -20°C in small aliquots to prevent freeze-thaw cycles.



Host: Rabbit
Target Name: PRSS36
Sample Tissue: 293T Cell Lysate
Antibody Dilution: 1.0µg/ml

Western Blotting

Image 1. Host: Rabbit Target Name: PRSS36 Sample Type: 293T Whole Cell lysates Antibody Dilution: 1.0ug/ml