

Datasheet for ABIN2791886
anti-PTAR1 antibody (C-Term)[Go to Product page](#)

1 Image

Overview

Quantity:	100 µL
Target:	PTAR1
Binding Specificity:	C-Term
Reactivity:	Human, Dog, Horse, Mouse, Rabbit, Rat
Host:	Rabbit
Clonality:	Polyclonal
Conjugate:	This PTAR1 antibody is un-conjugated
Application:	Western Blotting (WB)

Product Details

Immunogen:	The immunogen is a synthetic peptide directed towards the C-terminal region of Human PTAR1
Sequence:	LISQTVIDSS VMEQNPLRSE PALVPPKDEE AAVSTEEPRI NLPHLLEEEV
Predicted Reactivity:	Dog: 79%, Horse: 92%, Human: 100%, Mouse: 83%, Rabbit: 83%, Rat: 83%
Characteristics:	This is a rabbit polyclonal antibody against PTAR1. It was validated on Western Blot.
Purification:	Affinity Purified

Target Details

Target:	PTAR1
Alternative Name:	PTAR1 (PTAR1 Products)
Background:	The function of this protein remains unknown.

Target Details

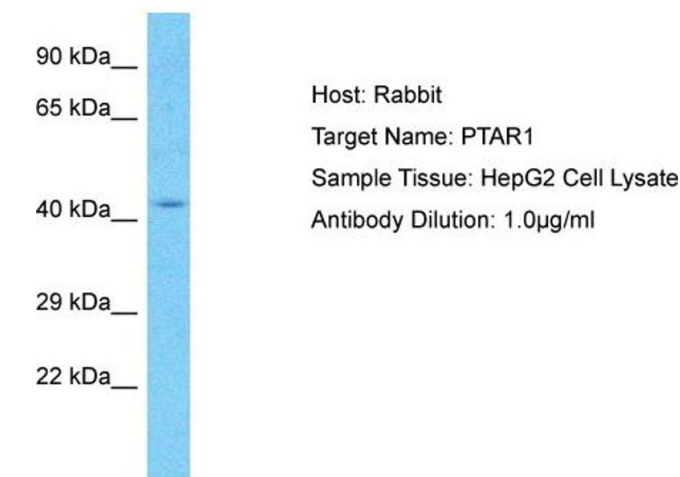
	Alias Symbols: - Protein Interaction Partner: UBC, Protein Size: 402
Molecular Weight:	46 kDa
Gene ID:	375743
NCBI Accession:	NM_001099666 , NP_001093136
UniProt:	Q7Z6K3

Application Details

Application Notes:	Optimal working dilution should be determined by the investigator.
Restrictions:	For Research Use only

Handling

Format:	Liquid
Concentration:	1 mg/mL
Buffer:	Liquid. Purified antibody supplied in 1x PBS buffer with 0.09 % (w/v) sodium azide and 2 % sucrose.
Preservative:	Sodium azide
Precaution of Use:	This product contains Sodium azide: a POISONOUS AND HAZARDOUS SUBSTANCE which should be handled by trained staff only.
Handling Advice:	Avoid repeat freeze-thaw cycles.
Storage:	-20 °C
Storage Comment:	For short term use, store at 2-8°C up to 1 week. For long term storage, store at -20°C in small aliquots to prevent freeze-thaw cycles.



Western Blotting

Image 1. Host: Rabbit Target Name: PTAR1 Sample Type: HepG2 Whole Cell lysates Antibody Dilution: 1.0ug/ml