



[Go to Product page](#)

Datasheet for ABIN2791887

anti-PTPN20 antibody (N-Term)

1 Image

Overview

Quantity:	100 µL
Target:	PTPN20 (PTPN20B)
Binding Specificity:	N-Term
Reactivity:	Human
Host:	Rabbit
Clonality:	Polyclonal
Conjugate:	This PTPN20 antibody is un-conjugated
Application:	Western Blotting (WB)

Product Details

Immunogen:	The immunogen is a synthetic peptide directed towards the N-terminal region of Human PTPN20B
Sequence:	ETLPSSSQEN TPRSKVFENK VNSEKVKLSL RNFPHNDYED VFEEPSESGS
Predicted Reactivity:	Human: 100%
Characteristics:	This is a rabbit polyclonal antibody against PTPN20B. It was validated on Western Blot.
Purification:	Affinity Purified

Target Details

Target:	PTPN20 (PTPN20B)
Alternative Name:	PTPN20B (PTPN20B Products)

Target Details

Background: The product of this gene belongs to the family of classical tyrosine-specific protein tyrosine phosphatases. Many protein tyrosine phosphatases have been shown to regulate fundamental cellular processes and several are mutated in human diseases. Chromosome 10q contains a segmental duplication resulting in multiple copies of the protein tyrosine phosphatase, non-receptor type 20 gene. The two nearly identical copies are designated as PTPN20A and PTPN20B. A third copy is only partially duplicated and contains a pseudogene, designated as PTPN20C. This gene encodes the more telomeric copy, PTPN20B. Multiple alternatively spliced transcript variants encoding different isoforms have been identified.

Protein Size: 411

Molecular Weight: 45 kDa

Gene ID: 26095

Application Details

Application Notes: Optimal working dilution should be determined by the investigator.

Restrictions: For Research Use only

Handling

Format: Liquid

Concentration: 1 mg/mL

Buffer: Liquid. Purified antibody supplied in 1x PBS buffer with 0.09 % (w/v) sodium azide and 2 % sucrose.

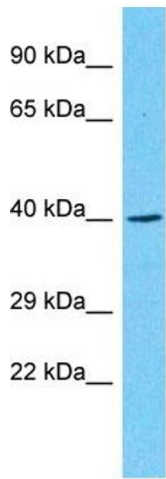
Preservative: Sodium azide

Precaution of Use: This product contains Sodium azide: a POISONOUS AND HAZARDOUS SUBSTANCE which should be handled by trained staff only.

Handling Advice: Avoid repeat freeze-thaw cycles.

Storage: -20 °C

Storage Comment: For short term use, store at 2-8°C up to 1 week. For long term storage, store at -20°C in small aliquots to prevent freeze-thaw cycles.



Host: Rabbit
Target Name: PTPN20B
Sample Tissue: THP-1 Cell Lysate
Antibody Dilution: 1.0µg/ml

Western Blotting

Image 1. Host: Rabbit Target Name: PTPN20B Sample Type: THP-1 Whole Cell lysates Antibody Dilution: 1.0ug/ml