



[Go to Product page](#)

Datasheet for ABIN2791893
anti-RAPGEFL1 antibody (C-Term)

1 Image

Overview

Quantity:	100 µL
Target:	RAPGEFL1
Binding Specificity:	C-Term
Reactivity:	Human, Mouse, Rat, Cow, Rabbit, Guinea Pig, Horse, Zebrafish (Danio rerio)
Host:	Rabbit
Clonality:	Polyclonal
Conjugate:	This RAPGEFL1 antibody is un-conjugated
Application:	Western Blotting (WB)

Product Details

Immunogen:	The immunogen is a synthetic peptide directed towards the C-terminal region of Human RAPGEFL1
Sequence:	KFKNLFKFE NLTDPCRNHK SYREVISKMK PPVIPFVPLI LKDLTFLHEG
Predicted Reactivity:	Cow: 100%, Guinea Pig: 100%, Horse: 100%, Human: 100%, Mouse: 100%, Rabbit: 100%, Rat: 100%, Zebrafish: 82%
Characteristics:	This is a rabbit polyclonal antibody against RAPGEFL1. It was validated on Western Blot.
Purification:	Affinity Purified

Target Details

Target:	RAPGEFL1
---------	----------

Target Details

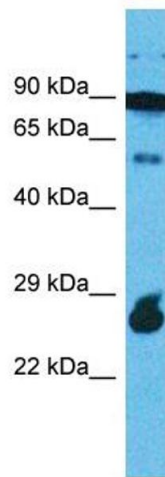
Alternative Name:	RAPGEFL1 (RAPGEFL1 Products)
Background:	RAPGEFL1 is a probable guanine nucleotide exchange factor (GEF). Protein Interaction Partner: MLH1, APP, Protein Size: 511
Molecular Weight:	56 kDa
Gene ID:	51195
Pathways:	Interferon-gamma Pathway , Neurotrophin Signaling Pathway , Platelet-derived growth Factor Receptor Signaling , Signaling of Hepatocyte Growth Factor Receptor

Application Details

Application Notes:	Optimal working dilution should be determined by the investigator.
Restrictions:	For Research Use only

Handling

Format:	Liquid
Concentration:	1 mg/mL
Buffer:	Liquid. Purified antibody supplied in 1x PBS buffer with 0.09 % (w/v) sodium azide and 2 % sucrose.
Preservative:	Sodium azide
Precaution of Use:	This product contains Sodium azide: a POISONOUS AND HAZARDOUS SUBSTANCE which should be handled by trained staff only.
Handling Advice:	Avoid repeat freeze-thaw cycles.
Storage:	-20 °C
Storage Comment:	For short term use, store at 2-8°C up to 1 week. For long term storage, store at -20°C in small aliquots to prevent freeze-thaw cycles.



Western Blotting

Image 1.