



[Go to Product page](#)

Datasheet for ABIN2791897

## anti-RIBC2 antibody (Middle Region)

### 1 Image

#### Overview

Quantity:	100 µL
Target:	RIBC2
Binding Specificity:	Middle Region
Reactivity:	Human, Mouse, Rat, Dog, Guinea Pig, Horse, Rabbit, Saccharomyces cerevisiae
Host:	Rabbit
Clonality:	Polyclonal
Conjugate:	This RIBC2 antibody is un-conjugated
Application:	Western Blotting (WB)

#### Product Details

Immunogen:	The immunogen is a synthetic peptide directed towards the middle region of Human RIBC2
Sequence:	KLESTTRKAV CASVKDFNKS QAIESVERKK QEKKQEEDN LAEITNLLRG
Predicted Reactivity:	Dog: 86%, Guinea Pig: 75%, Horse: 79%, Human: 100%, Mouse: 85%, Rabbit: 93%, Rat: 79%, Yeast: 82%
Characteristics:	This is a rabbit polyclonal antibody against RIBC2. It was validated on Western Blot.
Purification:	Affinity Purified

#### Target Details

Target:	RIBC2
Alternative Name:	RIBC2 ( <a href="#">RIBC2 Products</a> )

## Target Details

---

Background: The function of this protein remains unknown.  
Protein Interaction Partner: TREX1, COPS6, USHBP1, CCDC85B, RPL18A, GTPBP3, NINL, MTUS2, HOOK2, ATRIP, SARAF, BEGAIN, NRBP1, TRIM37, EFEMP2, RAD54B, TRAF2, TRIM23, AP2B1, PJA1, TEX11, VIM, JUP, KRT15, GFAP,  
Protein Size: 309

Molecular Weight: 33 kDa

Gene ID: 26150

UniProt: [Q9H4K1](#)

## Application Details

---

Application Notes: Optimal working dilution should be determined by the investigator.

Restrictions: For Research Use only

## Handling

---

Format: Liquid

Concentration: 1 mg/mL

Buffer: Liquid. Purified antibody supplied in 1x PBS buffer with 0.09 % (w/v) sodium azide and 2 % sucrose.

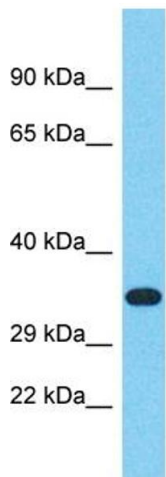
Preservative: Sodium azide

Precaution of Use: This product contains Sodium azide: a POISONOUS AND HAZARDOUS SUBSTANCE which should be handled by trained staff only.

Handling Advice: Avoid repeat freeze-thaw cycles.

Storage: -20 °C

Storage Comment: For short term use, store at 2-8°C up to 1 week. For long term storage, store at -20°C in small aliquots to prevent freeze-thaw cycles.



Host: Rabbit  
Target Name: RIBC2  
Sample Tissue: 721\_B Cell Lysate  
Antibody Dilution: 1.0µg/ml

### Western Blotting

**Image 1.** Host: Rabbit Target Name: RIBC2 Sample Tissue: Human 721\_B Whole Cell Antibody Dilution: 1ug/ml