



[Go to Product page](#)

Datasheet for ABIN2791904
anti-SAMD10 antibody (N-Term)

1 Image

Overview

Quantity:	100 µL
Target:	SAMD10
Binding Specificity:	N-Term
Reactivity:	Human, Mouse, Cow, Dog, Guinea Pig, Rat
Host:	Rabbit
Clonality:	Polyclonal
Conjugate:	This SAMD10 antibody is un-conjugated
Application:	Western Blotting (WB)

Product Details

Immunogen:	The immunogen is a synthetic peptide directed towards the N-terminal region of Human SAMD10
Sequence:	AHFSFCRTLL EHTVSAESIP CHLPRTPGTS LTWHDSRSQR AASSRPIKLL
Predicted Reactivity:	Cow: 86%, Dog: 86%, Guinea Pig: 93%, Human: 100%, Mouse: 93%, Rat: 93%
Characteristics:	This is a rabbit polyclonal antibody against SAMD10. It was validated on Western Blot.
Purification:	Affinity Purified

Target Details

Target:	SAMD10
Alternative Name:	SAMD10 (SAMD10 Products)

Target Details

Background: The function of this protein remains unknown.
Alias Symbols: C20orf136, dJ591C20, dJ591C20.7
Protein Size: 202

Molecular Weight: 22 kDa

Gene ID: 140700

NCBI Accession: [NM_080621](#), [NP_542188](#)

UniProt: [Q9BYL1](#)

Application Details

Application Notes: Optimal working dilution should be determined by the investigator.

Restrictions: For Research Use only

Handling

Format: Liquid

Concentration: 1 mg/mL

Buffer: Liquid. Purified antibody supplied in 1x PBS buffer with 0.09 % (w/v) sodium azide and 2 % sucrose.

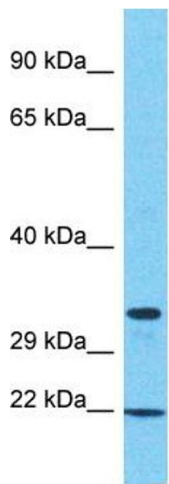
Preservative: Sodium azide

Precaution of Use: This product contains Sodium azide: a POISONOUS AND HAZARDOUS SUBSTANCE which should be handled by trained staff only.

Handling Advice: Avoid repeat freeze-thaw cycles.

Storage: -20 °C

Storage Comment: For short term use, store at 2-8°C up to 1 week. For long term storage, store at -20°C in small aliquots to prevent freeze-thaw cycles.



Host: Rabbit
Target Name: SAMD10
Sample Tissue: 786-0 Cell Lysate
Antibody Dilution: 1.0µg/ml

Western Blotting

Image 1. Host: Rabbit Target Name: SAMD10 Sample
Tissue: Human 786-0 Whole Cell Antibody Dilution: 1ug/ml