

Datasheet for ABIN2791905
anti-Sclt1 antibody (C-Term)



[Go to Product page](#)

1 Image

Overview

Quantity:	100 µL
Target:	Sclt1
Binding Specificity:	C-Term
Reactivity:	Human, Mouse, Rat, Dog, Guinea Pig, Horse, Rabbit
Host:	Rabbit
Clonality:	Polyclonal
Application:	Western Blotting (WB)

Product Details

Immunogen:	The immunogen is a synthetic peptide directed towards the C-terminal region of Human SCLT1
Sequence:	SRQKLHTQEL LSQLEMANEK VAENEKLILE HQEKANRLQR RLSQAEERAA
Predicted Reactivity:	Dog: 100%, Guinea Pig: 93%, Horse: 100%, Human: 100%, Mouse: 100%, Rabbit: 100%, Rat: 100%
Characteristics:	This is a rabbit polyclonal antibody against SCLT1. It was validated on Western Blot.
Purification:	Affinity Purified

Target Details

Target:	Sclt1
Alternative Name:	SCLT1 (Sclt1 Products)
Background:	SCLT1 acts as a linker protein between the voltage-gated sodium channel Na(v)1.8 and clathrin.

Target Details

Alias Symbols: CAP-1A, CAP1A, hCAP-1A
Protein Interaction Partner: LNX1, CALM1, IKBKG, AMOT, SCN10A,
Protein Size: 175

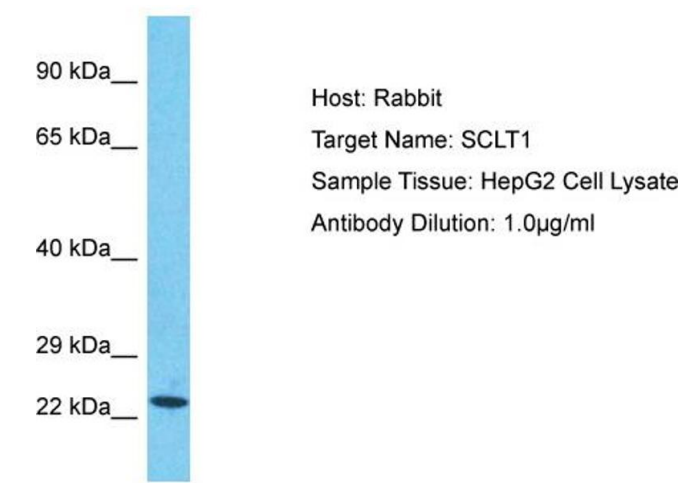
Molecular Weight:	19 kDa
Gene ID:	132320
NCBI Accession:	NM_144643 , NP_653244

Application Details

Application Notes:	Optimal working dilution should be determined by the investigator.
Restrictions:	For Research Use only

Handling

Format:	Liquid
Concentration:	1 mg/mL
Buffer:	Liquid. Purified antibody supplied in 1x PBS buffer with 0.09 % (w/v) sodium azide and 2 % sucrose.
Preservative:	Sodium azide
Precaution of Use:	This product contains Sodium azide: a POISONOUS AND HAZARDOUS SUBSTANCE which should be handled by trained staff only.
Handling Advice:	Avoid repeat freeze-thaw cycles.
Storage:	-20 °C
Storage Comment:	For short term use, store at 2-8°C up to 1 week. For long term storage, store at -20°C in small aliquots to prevent freeze-thaw cycles.



Western Blotting

Image 1. Host: Rabbit Target Name: SCLT1 Sample Tissue: Human HepG2 Whole Cell Antibody Dilution: 1ug/ml