

Datasheet for ABIN2791912  
**anti-SLC38A8 antibody (C-Term)**[Go to Product page](#)

## 1 Image

## Overview

Quantity:	100 µL
Target:	SLC38A8
Binding Specificity:	C-Term
Reactivity:	Human, Mouse, Rabbit, Rat, Cow, Dog, Guinea Pig, Horse
Host:	Rabbit
Clonality:	Polyclonal
Conjugate:	This SLC38A8 antibody is un-conjugated
Application:	Western Blotting (WB)

## Product Details

Immunogen:	The immunogen is a synthetic peptide directed towards the C-terminal region of Human SLC38A8
Sequence:	VSVLSLLACC LIYSLTGVYG FLTFGTEVSA DVLMSYPGND MVIIVARVLF
Predicted Reactivity:	Cow: 86%, Dog: 93%, Guinea Pig: 86%, Horse: 93%, Human: 100%, Mouse: 86%, Rabbit: 86%, Rat: 93%
Characteristics:	This is a rabbit polyclonal antibody against SLC38A8. It was validated on Western Blot.
Purification:	Affinity Purified

## Target Details

Target:	SLC38A8
---------	---------

## Target Details

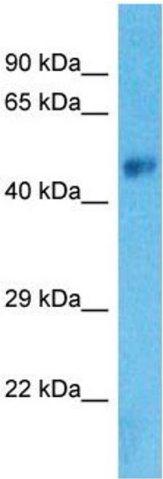
Alternative Name:	SLC38A8 ( <a href="#">SLC38A8 Products</a> )
Background:	SLC38A8 is a putative sodium-dependent amino acid/proton antiporter. Alias Symbols: - Protein Size: 435
Molecular Weight:	47 kDa
Gene ID:	146167
NCBI Accession:	<a href="#">NM_001080442</a> , <a href="#">NP_001073911</a>
UniProt:	<a href="#">A6NNN8</a>

## Application Details

Application Notes:	Optimal working dilution should be determined by the investigator.
Restrictions:	For Research Use only

## Handling

Format:	Liquid
Concentration:	1 mg/mL
Buffer:	Liquid. Purified antibody supplied in 1x PBS buffer with 0.09 % (w/v) sodium azide and 2 % sucrose.
Preservative:	Sodium azide
Precaution of Use:	This product contains Sodium azide: a POISONOUS AND HAZARDOUS SUBSTANCE which should be handled by trained staff only.
Handling Advice:	Avoid repeat freeze-thaw cycles.
Storage:	-20 °C
Storage Comment:	For short term use, store at 2-8°C up to 1 week. For long term storage, store at -20°C in small aliquots to prevent freeze-thaw cycles.



**Western Blotting**

**Image 1.**