

Datasheet for ABIN2791916  
**anti-SMCR8 antibody (C-Term)**[Go to Product page](#)

## 1 Image

## Overview

Quantity:	100 µL
Target:	SMCR8
Binding Specificity:	C-Term
Reactivity:	Human, Dog, Horse, Rabbit, Rat
Host:	Rabbit
Clonality:	Polyclonal
Conjugate:	This SMCR8 antibody is un-conjugated
Application:	Western Blotting (WB)

## Product Details

Immunogen:	The immunogen is a synthetic peptide directed towards the C-terminal region of Human SMCR8
Sequence:	STYYLHVQSM LTQLCSKAFL YTFCHHLHLP THDKETEELV ASRQMSFLKL
Predicted Reactivity:	Dog: 93%, Horse: 93%, Human: 100%, Rabbit: 79%, Rat: 79%
Characteristics:	This is a rabbit polyclonal antibody against SMCR8. It was validated on Western Blot.
Purification:	Affinity Purified

## Target Details

Target:	SMCR8
Alternative Name:	SMCR8 ( <a href="#">SMCR8 Products</a> )

## Target Details

Background: The function of this protein remains unknown.  
Protein Interaction Partner: UBC, MMS19, RB1CC1,  
Protein Size: 104

Molecular Weight: 937 kDa

Gene ID: 140775

UniProt: [Q8TEV9](#)

## Application Details

Application Notes: Optimal working dilution should be determined by the investigator.

Restrictions: For Research Use only

## Handling

Format: Liquid

Concentration: 1 mg/mL

Buffer: Liquid. Purified antibody supplied in 1x PBS buffer with 0.09 % (w/v) sodium azide and 2 % sucrose.

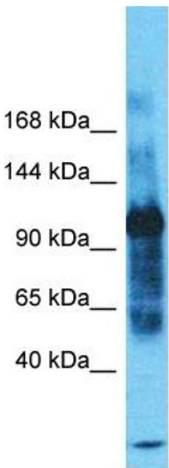
Preservative: Sodium azide

Precaution of Use: This product contains Sodium azide: a POISONOUS AND HAZARDOUS SUBSTANCE which should be handled by trained staff only.

Handling Advice: Avoid repeat freeze-thaw cycles.

Storage: -20 °C

Storage Comment: For short term use, store at 2-8°C up to 1 week. For long term storage, store at -20°C in small aliquots to prevent freeze-thaw cycles.



Host: Rabbit  
Target Name: SMCR8  
Sample Tissue: THP-1 Cell Lysate  
Antibody Dilution: 1.0µg/ml

Western Blotting

**Image 1.** Host: Rabbit Target Name: SMCR8 Sample  
Tissue: Human THP-1 Whole Cell Antibody Dilution: 1ug/ml