

Datasheet for ABIN2791920
anti-SPDYC antibody (N-Term)[Go to Product page](#)

1 Image

Overview

Quantity:	100 µL
Target:	SPDYC
Binding Specificity:	N-Term
Reactivity:	Human
Host:	Rabbit
Clonality:	Polyclonal
Conjugate:	This SPDYC antibody is un-conjugated
Application:	Western Blotting (WB)

Product Details

Immunogen:	The immunogen is a synthetic peptide directed towards the N-terminal region of Human SPDYC
Sequence:	PISISYEMSD SQDPTTSPVV TTQVELGGCS RQGGGNGFLR FRQHQEVQAF
Predicted Reactivity:	Human: 100%
Characteristics:	This is a rabbit polyclonal antibody against SPDYC. It was validated on Western Blot.
Purification:	Affinity Purified

Target Details

Target:	SPDYC
Alternative Name:	SPDYC (SPDYC Products)

Target Details

Background:	SPDYC promotes progression through the cell cycle via binding and activation of CDK1 and CDK2. It is involved in the spindle-assembly checkpoint. It is required for recruitment of MAD2L1, BUBR1 and BUB1 to kinetochores and is required for the correct localization of the active form of Aurora B in prometaphase. Alias Symbols: RINGOC, Ringo2 Protein Size: 293
-------------	-------------------------------------------------------------------------------------------------------------------------------------------------------------------------------------------------------------------------------------------------------------------------------------------------------------------------------------------------------------------------------

Molecular Weight:	33 kDa
-------------------	--------

Gene ID:	387778
----------	--------

NCBI Accession:	NM_001008778 , NP_001008778
-----------------	-------------------------------------------------------------

UniProt:	Q5MJ68
----------	------------------------

Application Details

Application Notes:	Optimal working dilution should be determined by the investigator.
--------------------	--------------------------------------------------------------------

Restrictions:	For Research Use only
---------------	-----------------------

Handling

Format:	Liquid
---------	--------

Concentration:	1 mg/mL
----------------	---------

Buffer:	Liquid. Purified antibody supplied in 1x PBS buffer with 0.09 % (w/v) sodium azide and 2 % sucrose.
---------	-----------------------------------------------------------------------------------------------------

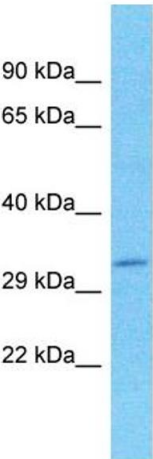
Preservative:	Sodium azide
---------------	--------------

Precaution of Use:	This product contains Sodium azide: a POISONOUS AND HAZARDOUS SUBSTANCE which should be handled by trained staff only.
--------------------	------------------------------------------------------------------------------------------------------------------------

Handling Advice:	Avoid repeat freeze-thaw cycles.
------------------	----------------------------------

Storage:	-20 °C
----------	--------

Storage Comment:	For short term use, store at 2-8°C up to 1 week. For long term storage, store at -20°C in small aliquots to prevent freeze-thaw cycles.
------------------	-----------------------------------------------------------------------------------------------------------------------------------------



Host: Rabbit
Target Name: SPDYC
Sample Tissue: HT1080 Cell Lysate
Antibody Dilution: 1.0µg/ml

Western Blotting

Image 1. Host: Rabbit Target Name: SPDYC Sample Type: HT1080 Whole Cell lysates Antibody Dilution: 1.0ug/ml