

Datasheet for ABIN2791921  
**anti-SPDYE2B antibody (N-Term)**



[Go to Product page](#)

1 Image

## Overview

Quantity:	100 µL
Target:	SPDYE2B
Binding Specificity:	N-Term
Reactivity:	Human, Mouse
Host:	Rabbit
Clonality:	Polyclonal
Conjugate:	This SPDYE2B antibody is un-conjugated
Application:	Western Blotting (WB)

## Product Details

Immunogen:	The immunogen is a synthetic peptide directed towards the N-terminal region of Human SPDYE2B
Sequence:	GKITSRQPH PQNEQSPQRS TSGYPLQEVV DDEMLGPSAP GVDPSPPCRS
Predicted Reactivity:	Human: 100%, Mouse: 75%
Characteristics:	This is a rabbit polyclonal antibody against SPDYE2B. It was validated on Western Blot.
Purification:	Affinity Purified

## Target Details

Target:	SPDYE2B
Alternative Name:	SPDYE2B ( <a href="#">SPDYE2B Products</a> )

## Target Details

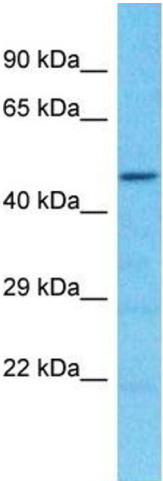
Background:	The function of this protein remains unknown. Alias Symbols: - Protein Size: 402
Molecular Weight:	48 kDa
Gene ID:	100310812
NCBI Accession:	<a href="#">NM_001166339</a> , <a href="#">NP_001159811</a>
UniProt:	<a href="#">A6NHP3</a>

## Application Details

Application Notes:	Optimal working dilution should be determined by the investigator.
Restrictions:	For Research Use only

## Handling

Format:	Liquid
Concentration:	1 mg/mL
Buffer:	Liquid. Purified antibody supplied in 1x PBS buffer with 0.09 % (w/v) sodium azide and 2 % sucrose.
Preservative:	Sodium azide
Precaution of Use:	This product contains Sodium azide: a POISONOUS AND HAZARDOUS SUBSTANCE which should be handled by trained staff only.
Handling Advice:	Avoid repeat freeze-thaw cycles.
Storage:	-20 °C
Storage Comment:	For short term use, store at 2-8°C up to 1 week. For long term storage, store at -20°C in small aliquots to prevent freeze-thaw cycles.



Host: Rabbit  
Target Name: SPDYE2B  
Sample Tissue: Hela Cell Lysate  
Antibody Dilution: 1.0µg/ml

Western Blotting

**Image 1.** Host: Rabbit Target Name: SPDYE2B Sample Type: Hela Whole Cell lysates Antibody Dilution: 1.0ug/ml