



[Go to Product page](#)

Datasheet for ABIN2791923

anti-SPDYE1 antibody (N-Term)

1 Image

Overview

Quantity:	100 µL
Target:	SPDYE1
Binding Specificity:	N-Term
Reactivity:	Human
Host:	Rabbit
Clonality:	Polyclonal
Conjugate:	This SPDYE1 antibody is un-conjugated
Application:	Western Blotting (WB)

Product Details

Immunogen:	The immunogen is a synthetic peptide directed towards the N-terminal region of Human SPDYE1
Sequence:	KREWSDESEE EPEKELAPEP EETWVVETLC GLKMCLKQQR VSPILLEHHK
Predicted Reactivity:	Human: 100%
Characteristics:	This is a rabbit polyclonal antibody against SPDYE1. It was validated on Western Blot.
Purification:	Affinity Purified

Target Details

Target:	SPDYE1
Alternative Name:	SPDYE1 (SPDYE1 Products)

Target Details

Background: This gene is located at chromosome 7p13 which is close to the Williams Beuren syndrome chromosome region 7q11.23.
Alias Symbols: Ringo1, SPDYE, WBSCR19
Protein Size: 336

Molecular Weight: 36 kDa

Gene ID: 285955

NCBI Accession: [NM_175064](#), [NP_778234](#)

UniProt: [Q8NFV5](#)

Application Details

Application Notes: Optimal working dilution should be determined by the investigator.

Restrictions: For Research Use only

Handling

Format: Liquid

Concentration: 1 mg/mL

Buffer: Liquid. Purified antibody supplied in 1x PBS buffer with 0.09 % (w/v) sodium azide and 2 % sucrose.

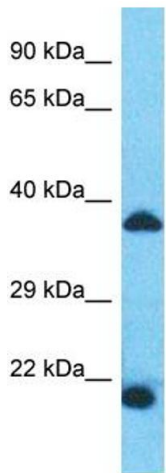
Preservative: Sodium azide

Precaution of Use: This product contains Sodium azide: a POISONOUS AND HAZARDOUS SUBSTANCE which should be handled by trained staff only.

Handling Advice: Avoid repeat freeze-thaw cycles.

Storage: -20 °C

Storage Comment: For short term use, store at 2-8°C up to 1 week. For long term storage, store at -20°C in small aliquots to prevent freeze-thaw cycles.



Host: Rabbit
Target Name: SPDYE1
Sample Tissue: Fetal Heart Lysate
Antibody Dilution: 1.0µg/ml

Western Blotting

Image 1. Host: Rabbit Target Name: SPDYE1 Sample Type: Fetal Heart lysates Antibody Dilution: 1.0ug/ml