

Datasheet for ABIN2791925  
**anti-TADA2B antibody (C-Term)**



[Go to Product page](#)

1 Image

## Overview

Quantity:	100 µL
Target:	TADA2B
Binding Specificity:	C-Term
Reactivity:	Human, Mouse, Rat, Cow, Dog, Guinea Pig, Horse
Host:	Rabbit
Clonality:	Polyclonal
Conjugate:	This TADA2B antibody is un-conjugated
Application:	Western Blotting (WB)

## Product Details

Immunogen:	The immunogen is a synthetic peptide directed towards the C-terminal region of Human TADA2B
Sequence:	RKENKNLAGS KRGKEDGKDS EFAAIENLPG FELLSDREKV LCSSLNLSPA
Predicted Reactivity:	Cow: 77%, Dog: 86%, Guinea Pig: 93%, Horse: 93%, Human: 100%, Mouse: 93%, Rat: 93%
Characteristics:	This is a rabbit polyclonal antibody against TADA2B. It was validated on Western Blot.
Purification:	Affinity Purified

## Target Details

Target:	TADA2B
Alternative Name:	TADA2B ( <a href="#">TADA2B Products</a> )

## Target Details

---

Background:	TADA2B functions as a transcriptional adaptor protein that potentiates transcription through coordination of histone acetyltransferase (HAT) activity and by linking activation factors to basal transcriptional machinery. Alias Symbols: ADA2(beta), ADA2B Protein Interaction Partner: HECW2, UBC, MBIP, SUPT3H, DR1, SREBF1, USP22, Protein Size: 420
Molecular Weight:	46 kDa
Gene ID:	93624
NCBI Accession:	<a href="#">NM_152293</a> , <a href="#">NP_689506</a>
UniProt:	<a href="#">Q86TJ2</a>
Pathways:	<a href="#">Chromatin Binding</a>

## Application Details

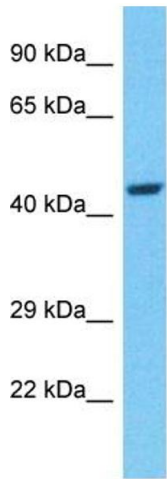
---

Application Notes:	Optimal working dilution should be determined by the investigator.
Restrictions:	For Research Use only

## Handling

---

Format:	Liquid
Concentration:	1 mg/mL
Buffer:	Liquid. Purified antibody supplied in 1x PBS buffer with 0.09 % (w/v) sodium azide and 2 % sucrose.
Preservative:	Sodium azide
Precaution of Use:	This product contains Sodium azide: a POISONOUS AND HAZARDOUS SUBSTANCE which should be handled by trained staff only.
Handling Advice:	Avoid repeat freeze-thaw cycles.
Storage:	-20 °C
Storage Comment:	For short term use, store at 2-8°C up to 1 week. For long term storage, store at -20°C in small aliquots to prevent freeze-thaw cycles.



Host: Rabbit  
Target Name: TADA2B  
Sample Tissue: MCF7 Cell Lysate  
Antibody Dilution: 1.0µg/ml

### Western Blotting

**Image 1.** Host: Rabbit Target Name: TADA2B Sample Type: MCF7 Whole Cell lysates Antibody Dilution: 1.0ug/ml