

Datasheet for ABIN2791931
anti-TBC1D8B antibody (N-Term)[Go to Product page](#)

1 Image

Overview

Quantity:	100 µL
Target:	TBC1D8B
Binding Specificity:	N-Term
Reactivity:	Human, Rabbit, Rat, Cow, Dog, Guinea Pig, Mouse
Host:	Rabbit
Clonality:	Polyclonal
Conjugate:	This TBC1D8B antibody is un-conjugated
Application:	Western Blotting (WB)

Product Details

Immunogen:	The immunogen is a synthetic peptide directed towards the N-terminal region of Human TBC1D8B
Sequence:	FDSNEDITNF VQGKIRGLIA EEGKHCFake DDPEKFREAL LKFEKCFGLP
Predicted Reactivity:	Cow: 93%, Dog: 86%, Guinea Pig: 93%, Human: 100%, Mouse: 86%, Rabbit: 86%, Rat: 93%
Characteristics:	This is a rabbit polyclonal antibody against TBC1D8B. It was validated on Western Blot.
Purification:	Affinity Purified

Target Details

Target:	TBC1D8B
Alternative Name:	TBC1D8B (TBC1D8B Products)

Target Details

Background: TBC1D8B may act as a GTPase-activating protein for Rab family protein(s).
Alias Symbols: -
Protein Interaction Partner: UBC,
Protein Size: 632

Molecular Weight: 72 kDa

Gene ID: 54885

NCBI Accession: [NM_198881](#), [NP_942582](#)

Application Details

Application Notes: Optimal working dilution should be determined by the investigator.

Restrictions: For Research Use only

Handling

Format: Liquid

Concentration: 1 mg/mL

Buffer: Liquid. Purified antibody supplied in 1x PBS buffer with 0.09 % (w/v) sodium azide and 2 % sucrose.

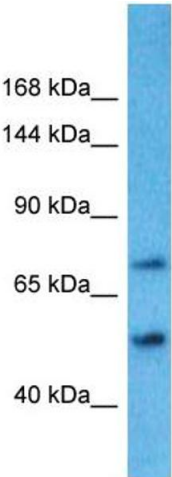
Preservative: Sodium azide

Precaution of Use: This product contains Sodium azide: a POISONOUS AND HAZARDOUS SUBSTANCE which should be handled by trained staff only.

Handling Advice: Avoid repeat freeze-thaw cycles.

Storage: -20 °C

Storage Comment: For short term use, store at 2-8°C up to 1 week. For long term storage, store at -20°C in small aliquots to prevent freeze-thaw cycles.



Western Blotting

Image 1. Host: Rabbit Target Name: TBC1D8B Sample Type: Placenta lysates Antibody Dilution: 1.0ug/ml