

Datasheet for ABIN2791936  
**anti-TELO2 antibody (C-Term)**[Go to Product page](#)

## 1 Image

## Overview

Quantity:	100 µL
Target:	TELO2
Binding Specificity:	C-Term
Reactivity:	Human, Mouse, Rat, Cow, Dog, Guinea Pig, Horse, Pig, Rabbit
Host:	Rabbit
Clonality:	Polyclonal
Conjugate:	This TELO2 antibody is un-conjugated
Application:	Western Blotting (WB)

## Product Details

Immunogen:	The immunogen is a synthetic peptide directed towards the C-terminal region of Human TELO2
Sequence:	LEDLMDELLE ARSWLADVAE KDPDEDCRTL ALRALLLLQR LKNRLLPPAS
Predicted Reactivity:	Cow: 85%, Dog: 85%, Guinea Pig: 92%, Horse: 100%, Human: 100%, Mouse: 92%, Pig: 100%, Rabbit: 92%, Rat: 92%
Characteristics:	This is a rabbit polyclonal antibody against TELO2. It was validated on Western Blot.
Purification:	Affinity Purified

## Target Details

Target:	TELO2
Alternative Name:	TELO2 ( <a href="#">TELO2 Products</a> )

## Target Details

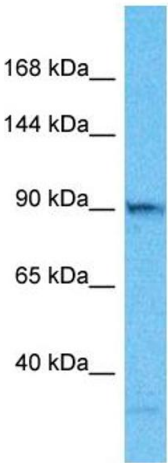
Background:	<p>This gene encodes a protein that functions as an S-phase checkpoint protein in the cell cycle.</p> <p>The protein may also play a role in DNA repair.</p> <p>Alias Symbols: CLK2, TEL2</p> <p>Protein Interaction Partner: UBC, RUFY1, SMEK1, PIH1D1, COPG1, TTI1, COPB2, EGFR, RUVBL1, VCP, AK2, CORO1B, TPM4, UBD, SMG1, TRRAP, PRKDC, MTOR, ATR, ATM, PIDD1, CACNA1A, TTI2, RPAP3, RUVBL2, DNAJB1, HSPA4, CLN3, KAT5, PSMD6, MAGED1,</p> <p>Protein Size: 837</p>
Molecular Weight:	92 kDa
Gene ID:	9894
NCBI Accession:	<a href="#">NM_016111</a> , <a href="#">NP_057195</a>
UniProt:	<a href="#">Q9Y4R8</a>

## Application Details

Application Notes:	Optimal working dilution should be determined by the investigator.
Restrictions:	For Research Use only

## Handling

Format:	Liquid
Concentration:	1 mg/mL
Buffer:	Liquid. Purified antibody supplied in 1x PBS buffer with 0.09 % (w/v) sodium azide and 2 % sucrose.
Preservative:	Sodium azide
Precaution of Use:	This product contains Sodium azide: a POISONOUS AND HAZARDOUS SUBSTANCE which should be handled by trained staff only.
Handling Advice:	Avoid repeat freeze-thaw cycles.
Storage:	-20 °C
Storage Comment:	For short term use, store at 2-8°C up to 1 week. For long term storage, store at -20°C in small aliquots to prevent freeze-thaw cycles.



Host: Rabbit  
Target Name: TELO2  
Sample Tissue: HepG2 Cell Lysate  
Antibody Dilution: 1.0µg/ml

**Western Blotting**

**Image 1.** Host: Rabbit Target Name: TELO2 Sample Type: HepG2 Whole Cell lysates Antibody Dilution: 1.0ug/ml