



[Go to Product page](#)

Datasheet for ABIN2791941
anti-TMED6 antibody (C-Term)

1 Image

Overview

Quantity:	100 µL
Target:	TMED6
Binding Specificity:	C-Term
Reactivity:	Human, Cow, Dog, Horse, Mouse, Pig, Rabbit, Rat
Host:	Rabbit
Clonality:	Polyclonal
Conjugate:	This TMED6 antibody is un-conjugated
Application:	Western Blotting (WB)

Product Details

Immunogen:	The immunogen is a synthetic peptide directed towards the C-terminal region of Human TMED6
Sequence:	FGVFYEGPET DHKQKQKQKQL NDTLDAIEDG TQKVQNNIFH MWRYYNFARM
Predicted Reactivity:	Cow: 79%, Dog: 80%, Horse: 86%, Human: 100%, Mouse: 79%, Pig: 86%, Rabbit: 86%, Rat: 79%
Characteristics:	This is a rabbit polyclonal antibody against TMED6. It was validated on Western Blot.
Purification:	Affinity Purified

Target Details

Target:	TMED6
Alternative Name:	TMED6 (TMED6 Products)

Target Details

Background: The function of this protein remains unknown.
Alias Symbols: PR034237, SPL9146
Protein Size: 240

Molecular Weight: 26 kDa

Gene ID: 146456

NCBI Accession: [NM_144676](#), [NP_653277](#)

UniProt: [Q8WW62](#)

Application Details

Application Notes: Optimal working dilution should be determined by the investigator.

Restrictions: For Research Use only

Handling

Format: Liquid

Concentration: 1 mg/mL

Buffer: Liquid. Purified antibody supplied in 1x PBS buffer with 0.09 % (w/v) sodium azide and 2 % sucrose.

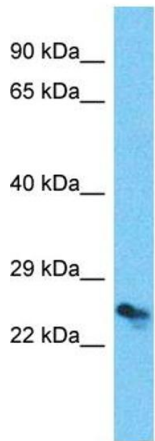
Preservative: Sodium azide

Precaution of Use: This product contains Sodium azide: a POISONOUS AND HAZARDOUS SUBSTANCE which should be handled by trained staff only.

Handling Advice: Avoid repeat freeze-thaw cycles.

Storage: -20 °C

Storage Comment: For short term use, store at 2-8°C up to 1 week. For long term storage, store at -20°C in small aliquots to prevent freeze-thaw cycles.



Host: Rabbit
Target Name: TMED6
Sample Tissue: RPMI-8226 Cell Lysate
Antibody Dilution: 1.0µg/ml

Western Blotting

Image 1. Host: Rabbit Target Name: TMED6 Sample Type: RPMI-8226 Whole Cell lysates Antibody Dilution: 1.0ug/ml