

Datasheet for ABIN2791942
anti-TMEM26 antibody (C-Term)[Go to Product page](#)

2 Images

Overview

Quantity:	100 µL
Target:	TMEM26
Binding Specificity:	C-Term
Reactivity:	Human
Host:	Rabbit
Clonality:	Polyclonal
Conjugate:	This TMEM26 antibody is un-conjugated
Application:	Western Blotting (WB)

Product Details

Immunogen:	The immunogen is a synthetic peptide directed towards the C-terminal region of Human TMEM26
Sequence:	RSQSEGLKGE HGCRAQTSES GPSQRDWQNE SKEGLAIPLR GSPVTSDDSH
Predicted Reactivity:	Human: 100%
Characteristics:	This is a rabbit polyclonal antibody against TMEM26. It was validated on Western Blot.
Purification:	Affinity Purified

Target Details

Target:	TMEM26
Alternative Name:	TMEM26 (TMEM26 Products)

Target Details

Background: The function of this protein remains unknown.
Alias Symbols: -
Protein Size: 368

Molecular Weight: 40 kDa

Gene ID: 219623

NCBI Accession: [NM_178505](#), [NP_848600](#)

UniProt: [Q6ZUK4](#)

Application Details

Application Notes: Optimal working dilution should be determined by the investigator.

Restrictions: For Research Use only

Handling

Format: Liquid

Concentration: 1 mg/mL

Buffer: Liquid. Purified antibody supplied in 1x PBS buffer with 0.09 % (w/v) sodium azide and 2 % sucrose.

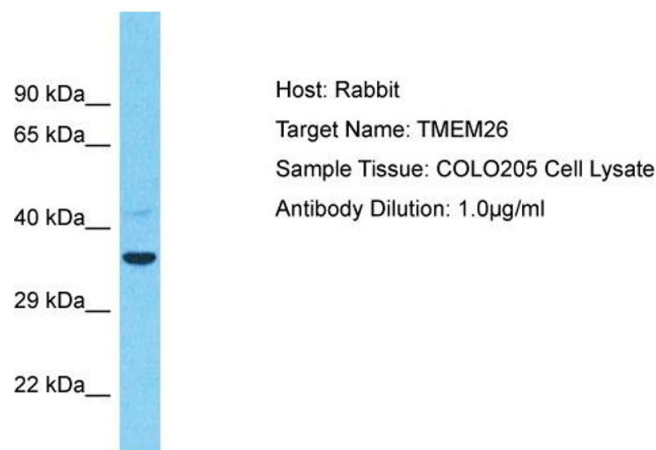
Preservative: Sodium azide

Precaution of Use: This product contains Sodium azide: a POISONOUS AND HAZARDOUS SUBSTANCE which should be handled by trained staff only.

Handling Advice: Avoid repeat freeze-thaw cycles.

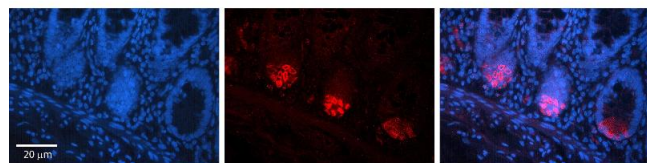
Storage: -20 °C

Storage Comment: For short term use, store at 2-8°C up to 1 week. For long term storage, store at -20°C in small aliquots to prevent freeze-thaw cycles.



Western Blotting

Image 1. Host: Rabbit Target Name: TMEM26 Sample Type: COLO205 Whole Cell lysates Antibody Dilution: 1.0ug/ml



Immunohistochemistry

Image 2. Rabbit Anti-TMEM26 Antibody Catalog Number: ARP71768_P050 Formalin Fixed Paraffin Embedded Tissue: Human Human Colon Tissue Observed Staining: Plasma membrane, Cytoplasm Primary Antibody Concentration: 1:100 Other Working Concentrations: 1:600 Secondary Antibody: Donkey anti-Rabbit-Cy3 Secondary Antibody Concentration: 1:200 Magnification: 20X Exposure Time: 0.5 - 2.0 sec