



[Go to Product page](#)

Datasheet for ABIN2791943

anti-TMEM39B antibody (N-Term)

1 Image

Overview

Quantity:	100 µL
Target:	TMEM39B
Binding Specificity:	N-Term
Reactivity:	Human, Rabbit, Rat, Cow, Dog, Guinea Pig, Horse
Host:	Rabbit
Clonality:	Polyclonal
Conjugate:	This TMEM39B antibody is un-conjugated
Application:	Western Blotting (WB)

Product Details

Immunogen:	The immunogen is a synthetic peptide directed towards the N-terminal region of human TMEM39B
Sequence:	PLCEPGSSGG SSGSHTSSAS VTSVRSRTRS SSGTGLSSPP LATQTVVPLQ
Predicted Reactivity:	Cow: 86%, Dog: 86%, Guinea Pig: 86%, Horse: 93%, Human: 100%, Rabbit: 79%, Rat: 86%
Characteristics:	This is a rabbit polyclonal antibody against TMEM39B. It was validated on Western Blot.
Purification:	Affinity Purified

Target Details

Target:	TMEM39B
Alternative Name:	TMEM39B (TMEM39B Products)

Target Details

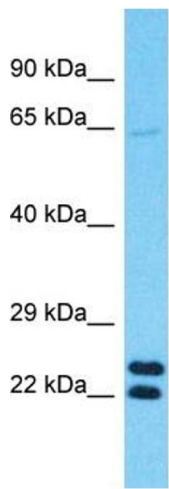
Background:	Protein Size: 193
Molecular Weight:	21 kDa
Gene ID:	55116
NCBI Accession:	NM_018056 , NP_060526
UniProt:	Q9GZU3
Pathways:	SARS-CoV-2 Protein Interactome

Application Details

Application Notes:	Optimal working dilution should be determined by the investigator.
Restrictions:	For Research Use only

Handling

Format:	Liquid
Concentration:	1 mg/mL
Buffer:	Liquid. Purified antibody supplied in 1x PBS buffer with 0.09 % (w/v) sodium azide and 2 % sucrose.
Preservative:	Sodium azide
Precaution of Use:	This product contains Sodium azide: a POISONOUS AND HAZARDOUS SUBSTANCE which should be handled by trained staff only.
Handling Advice:	Avoid repeat freeze-thaw cycles.
Storage:	-20 °C
Storage Comment:	For short term use, store at 2-8°C up to 1 week. For long term storage, store at -20°C in small aliquots to prevent freeze-thaw cycles.



Host: Rabbit
Target Name: TMEM39B
Sample Tissue: U937 Cell Lysate
Antibody Dilution: 1.0µg/ml

Western Blotting

Image 1. Host: Rabbit Target Name: TMEM39B Sample Type: U937 Whole Cell lysates Antibody Dilution: 1.0ug/ml