

Datasheet for ABIN2791945  
**anti-TMEM105 antibody (N-Term)**[Go to Product page](#)

## 1 Image

## Overview

Quantity:	100 µL
Target:	TMEM105
Binding Specificity:	N-Term
Reactivity:	Human
Host:	Rabbit
Clonality:	Polyclonal
Conjugate:	This TMEM105 antibody is un-conjugated
Application:	Western Blotting (WB)

## Product Details

Immunogen:	The immunogen is a synthetic peptide directed towards the N-terminal region of Human TMEM105
Sequence:	IGQLIYLLTW SLFTAWLRPP TLLQGPRTSP QGSPPRSPWG DCAEPSCLCE
Predicted Reactivity:	Human: 100%
Characteristics:	This is a rabbit polyclonal antibody against TMEM105. It was validated on Western Blot.
Purification:	Affinity Purified

## Target Details

Target:	TMEM105
Alternative Name:	TMEM105 ( <a href="#">TMEM105 Products</a> )

## Target Details

Background: The function of this protein remains unknown.  
Alias Symbols: -  
Protein Size: 129

Molecular Weight: 14 kDa

Gene ID: 284186

NCBI Accession: [NM\\_178520](#), [NP\\_848615](#)

UniProt: [Q8N8V8](#)

## Application Details

Application Notes: Optimal working dilution should be determined by the investigator.

Restrictions: For Research Use only

## Handling

Format: Liquid

Concentration: 1 mg/mL

Buffer: Liquid. Purified antibody supplied in 1x PBS buffer with 0.09 % (w/v) sodium azide and 2 % sucrose.

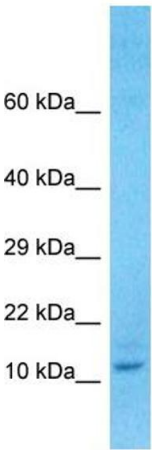
Preservative: Sodium azide

Precaution of Use: This product contains Sodium azide: a POISONOUS AND HAZARDOUS SUBSTANCE which should be handled by trained staff only.

Handling Advice: Avoid repeat freeze-thaw cycles.

Storage: -20 °C

Storage Comment: For short term use, store at 2-8°C up to 1 week. For long term storage, store at -20°C in small aliquots to prevent freeze-thaw cycles.



Host: Rabbit  
Target Name: TMEM105  
Sample Tissue: OVCAR-3 Cell Lysate  
Antibody Dilution: 1.0µg/ml

Western Blotting

**Image 1.** Host: Rabbit Target Name: TMEM105 Sample Type: OVCAR-3 Whole cell lysates Antibody Dilution: 1.0ug/ml