

Datasheet for ABIN2791946  
**anti-TMEM116 antibody (C-Term)**[Go to Product page](#)

## 1 Image

## Overview

Quantity:	100 µL
Target:	TMEM116
Binding Specificity:	C-Term
Reactivity:	Human, Cow, Dog, Guinea Pig, Horse, Rabbit, Rat
Host:	Rabbit
Clonality:	Polyclonal
Conjugate:	This TMEM116 antibody is un-conjugated
Application:	Western Blotting (WB)

## Product Details

Immunogen:	The immunogen is a synthetic peptide directed towards the C-terminal region of Human TMEM116
Sequence:	QVRFYPPVAF FCCWGPVIL MIIKLTQPQD TKLHMAlyVL QALTATSQGL
Predicted Reactivity:	Cow: 92%, Dog: 93%, Guinea Pig: 100%, Horse: 93%, Human: 100%, Rabbit: 86%, Rat: 100%
Characteristics:	This is a rabbit polyclonal antibody against TMEM116. It was validated on Western Blot.
Purification:	Affinity Purified

## Target Details

Target:	TMEM116
Alternative Name:	TMEM116 ( <a href="#">TMEM116 Products</a> )

## Target Details

Background:	The function of this protein remains unknown. Protein Size: 337
-------------	--

Molecular Weight:	37 kDa
-------------------	--------

Gene ID:	89894
----------	-------

## Application Details

Application Notes:	Optimal working dilution should be determined by the investigator.
--------------------	--

Restrictions:	For Research Use only
---------------	-----------------------

## Handling

Format:	Liquid
---------	--------

Concentration:	1 mg/mL
----------------	---------

Buffer:	Liquid. Purified antibody supplied in 1x PBS buffer with 0.09 % (w/v) sodium azide and 2 % sucrose.
---------	---

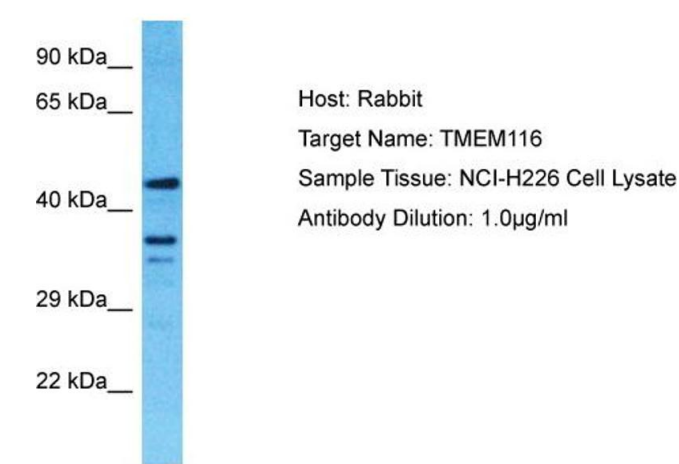
Preservative:	Sodium azide
---------------	--------------

Precaution of Use:	This product contains Sodium azide: a POISONOUS AND HAZARDOUS SUBSTANCE which should be handled by trained staff only.
--------------------	--

Handling Advice:	Avoid repeat freeze-thaw cycles.
------------------	----------------------------------

Storage:	-20 °C
----------	--------

Storage Comment:	For short term use, store at 2-8°C up to 1 week. For long term storage, store at -20°C in small aliquots to prevent freeze-thaw cycles.
------------------	---



**Western Blotting**

**Image 1.** Host: Rabbit Target Name: TMEM116 Sample Tissue: Human NCI-H226 Whole Cell Antibody Dilution: 1ug/ml