

Datasheet for ABIN2791947  
**anti-TMEM136 antibody (N-Term)**[Go to Product page](#)

## 1 Image

## Overview

Quantity:	100 µL
Target:	TMEM136
Binding Specificity:	N-Term
Reactivity:	Human, Cow, Dog, Guinea Pig, Horse, Mouse, Rabbit, Rat
Host:	Rabbit
Clonality:	Polyclonal
Conjugate:	This TMEM136 antibody is un-conjugated
Application:	Western Blotting (WB)

## Product Details

Immunogen:	The immunogen is a synthetic peptide directed towards the N-terminal region of Human TMEM136
Sequence:	LALCLQVLCS LCGWLSLYIS FCHLNKHRSY EWSCRLVTFT HGVLSIGLSA
Predicted Reactivity:	Cow: 92%, Dog: 93%, Guinea Pig: 100%, Horse: 79%, Human: 100%, Mouse: 86%, Rabbit: 79%, Rat: 93%
Characteristics:	This is a rabbit polyclonal antibody against TMEM136. It was validated on Western Blot.
Purification:	Affinity Purified

## Target Details

Target:	TMEM136
---------	---------

## Target Details

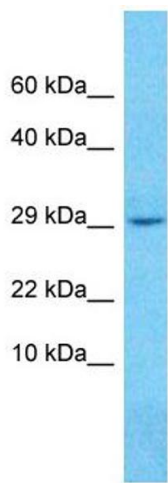
Alternative Name:	TMEM136 ( <a href="#">TMEM136 Products</a> )
Background:	The function of this protein remains unknown. Protein Size: 267
Molecular Weight:	29 kDa
Gene ID:	219902

## Application Details

Application Notes:	Optimal working dilution should be determined by the investigator.
Restrictions:	For Research Use only

## Handling

Format:	Liquid
Concentration:	1 mg/mL
Buffer:	Liquid. Purified antibody supplied in 1x PBS buffer with 0.09 % (w/v) sodium azide and 2 % sucrose.
Preservative:	Sodium azide
Precaution of Use:	This product contains Sodium azide: a POISONOUS AND HAZARDOUS SUBSTANCE which should be handled by trained staff only.
Handling Advice:	Avoid repeat freeze-thaw cycles.
Storage:	-20 °C
Storage Comment:	For short term use, store at 2-8°C up to 1 week. For long term storage, store at -20°C in small aliquots to prevent freeze-thaw cycles.



Western Blotting

Image 1.