



[Go to Product page](#)

Datasheet for ABIN2791950  
**anti-TMEM169 antibody (C-Term)**

1 Image

### Overview

Quantity:	100 µL
Target:	TMEM169
Binding Specificity:	C-Term
Reactivity:	Human, Cow, Dog, Guinea Pig, Horse, Mouse, Rabbit, Rat
Host:	Rabbit
Clonality:	Polyclonal
Conjugate:	This TMEM169 antibody is un-conjugated
Application:	Western Blotting (WB)

### Product Details

Immunogen:	The immunogen is a synthetic peptide directed towards the C-terminal region of Human TMEM169
Sequence:	RDMEKGF CGW LCSKLGLEDC SPYSIVELLE SDNISSTLSN KDPIQEVETS
Predicted Reactivity:	Cow: 86%, Dog: 86%, Guinea Pig: 86%, Horse: 93%, Human: 100%, Mouse: 86%, Rabbit: 93%, Rat: 93%
Characteristics:	This is a rabbit polyclonal antibody against TMEM169. It was validated on Western Blot.
Purification:	Affinity Purified

### Target Details

Target:	TMEM169
---------	---------

## Target Details

---

Alternative Name: TMEM169 ([TMEM169 Products](#))

---

Background: The function of this protein remains unknown.  
Alias Symbols: -  
Protein Interaction Partner: UBC,  
Protein Size: 297

---

Molecular Weight: 32 kDa

---

Gene ID: 92691

---

NCBI Accession: [NM\\_138390](#), [NP\\_612399](#)

---

UniProt: [Q96HH4](#)

---

## Application Details

---

Application Notes: Optimal working dilution should be determined by the investigator.

---

Restrictions: For Research Use only

---

## Handling

---

Format: Liquid

---

Concentration: 1 mg/mL

---

Buffer: Liquid. Purified antibody supplied in 1x PBS buffer with 0.09 % (w/v) sodium azide and 2 % sucrose.

---

Preservative: Sodium azide

---

Precaution of Use: This product contains Sodium azide: a POISONOUS AND HAZARDOUS SUBSTANCE which should be handled by trained staff only.

---

Handling Advice: Avoid repeat freeze-thaw cycles.

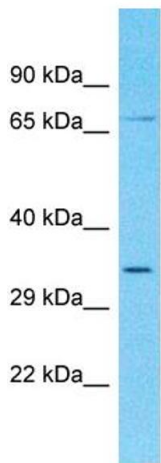
---

Storage: -20 °C

---

Storage Comment: For short term use, store at 2-8°C up to 1 week. For long term storage, store at -20°C in small aliquots to prevent freeze-thaw cycles.

---



Host: Rabbit  
Target Name: TMEM169  
Sample Tissue: Fetal Kidney Lysate  
Antibody Dilution: 1.0µg/ml

### Western Blotting

**Image 1.** Host: Rabbit Target Name: TMEM169 Sample Type: Fetal Kidney lysates Antibody Dilution: 1.0ug/ml