



Datasheet for ABIN2791959
anti-TMPRSS11F antibody (C-Term)



[Go to Product page](#)

1 Image

Overview

Quantity:	100 µL
Target:	TMPRSS11F
Binding Specificity:	C-Term
Reactivity:	Human, Mouse, Pig, Rabbit, Rat, Cow, Dog, Horse
Host:	Rabbit
Clonality:	Polyclonal
Conjugate:	This TMPRSS11F antibody is un-conjugated
Application:	Western Blotting (WB)

Product Details

Immunogen:	The immunogen is a synthetic peptide directed towards the C-terminal region of Human TMPRSS11F
Sequence:	IILHENYHRE TNENDIALVQ LSTGVEFSNI VQRVCLPDSS IKLPPKTSVF
Predicted Reactivity:	Cow: 86%, Dog: 100%, Horse: 100%, Human: 100%, Mouse: 86%, Pig: 93%, Rabbit: 93%, Rat: 79%
Characteristics:	This is a rabbit polyclonal antibody against TMPRSS11F. It was validated on Western Blot.
Purification:	Affinity Purified

Target Details

Target:	TMPRSS11F
Alternative Name:	TMPRSS11F (TMPRSS11F Products)

Target Details

Background: TMPRSS11F is a probable serine protease.
Alias Symbols: -
Protein Size: 438

Molecular Weight: 49 kDa

Gene ID: 389208

NCBI Accession: [NM_207407](#), [NP_997290](#)

UniProt: [Q6ZWK6](#)

Application Details

Application Notes: Optimal working dilution should be determined by the investigator.

Restrictions: For Research Use only

Handling

Format: Liquid

Concentration: 1 mg/mL

Buffer: Liquid. Purified antibody supplied in 1x PBS buffer with 0.09 % (w/v) sodium azide and 2 % sucrose.

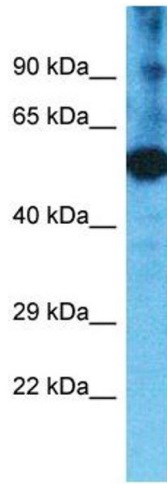
Preservative: Sodium azide

Precaution of Use: This product contains Sodium azide: a POISONOUS AND HAZARDOUS SUBSTANCE which should be handled by trained staff only.

Handling Advice: Avoid repeat freeze-thaw cycles.

Storage: -20 °C

Storage Comment: For short term use, store at 2-8°C up to 1 week. For long term storage, store at -20°C in small aliquots to prevent freeze-thaw cycles.



Western Blotting

Image 1.