

Datasheet for ABIN2791961
anti-TRIM16L antibody (N-Term)[Go to Product page](#)

1 Image

Overview

Quantity:	100 µL
Target:	TRIM16L
Binding Specificity:	N-Term
Reactivity:	Human, Cow, Guinea Pig, Horse, Mouse, Rabbit, Rat
Host:	Rabbit
Clonality:	Polyclonal
Conjugate:	This TRIM16L antibody is un-conjugated
Application:	Western Blotting (WB)

Product Details

Immunogen:	The immunogen is a synthetic peptide directed towards the N-terminal region of Human TRIM16L
Sequence:	RKAQANVMLF LEEKEQAALS QANGIKAHLE YRSAEMEKSK QELETMAAIS
Predicted Reactivity:	Cow: 77%, Guinea Pig: 92%, Horse: 92%, Human: 100%, Mouse: 92%, Rabbit: 92%, Rat: 85%
Characteristics:	This is a rabbit polyclonal antibody against TRIM16L. It was validated on Western Blot.
Purification:	Affinity Purified

Target Details

Target:	TRIM16L
Alternative Name:	TRIM16L (TRIM16L Products)

Target Details

Background: The function of this protein remains unknown.
Alias Symbols: TRIM70
Protein Interaction Partner: UBC,
Protein Size: 348

Molecular Weight: 40 kDa

Gene ID: 147166

NCBI Accession: [NM_001037330](#), [NP_001032407](#)

UniProt: [Q309B1](#)

Application Details

Application Notes: Optimal working dilution should be determined by the investigator.

Restrictions: For Research Use only

Handling

Format: Liquid

Concentration: 1 mg/mL

Buffer: Liquid. Purified antibody supplied in 1x PBS buffer with 0.09 % (w/v) sodium azide and 2 % sucrose.

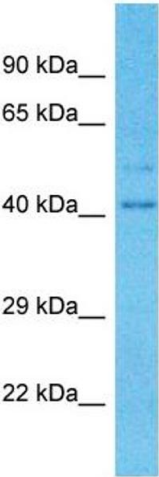
Preservative: Sodium azide

Precaution of Use: This product contains Sodium azide: a POISONOUS AND HAZARDOUS SUBSTANCE which should be handled by trained staff only.

Handling Advice: Avoid repeat freeze-thaw cycles.

Storage: -20 °C

Storage Comment: For short term use, store at 2-8°C up to 1 week. For long term storage, store at -20°C in small aliquots to prevent freeze-thaw cycles.



Western Blotting

Image 1.