



[Go to Product page](#)

Datasheet for ABIN2791966
anti-TTC24 antibody (C-Term)

1 Image

Overview

| | |
|----------------------|--------------------------------------|
| Quantity: | 100 µL |
| Target: | TTC24 |
| Binding Specificity: | C-Term |
| Reactivity: | Human |
| Host: | Rabbit |
| Clonality: | Polyclonal |
| Conjugate: | This TTC24 antibody is un-conjugated |
| Application: | Western Blotting (WB) |

Product Details

| | |
|-----------------------|--|
| Immunogen: | The immunogen is a synthetic peptide directed towards the C-terminal region of Human TTC24 |
| Sequence: | HRSSSGWEDE EFEEGHQKKK EERSANVPVR AGPGRPELCF LPGTVNHSHH |
| Predicted Reactivity: | Human: 100% |
| Characteristics: | This is a rabbit polyclonal antibody against TTC24. It was validated on Western Blot. |
| Purification: | Affinity Purified |

Target Details

| | |
|-------------------|---|
| Target: | TTC24 |
| Alternative Name: | TTC24 (TTC24 Products) |
| Background: | The function of this protein remains unknown. |

Target Details

Alias Symbols: -

Protein Size: 582

Molecular Weight: 63 kDa

Gene ID: 164118

NCBI Accession: [NM_001105669, NP_001099139](#)

UniProt: [A2A3L6](#)

Application Details

Application Notes: Optimal working dilution should be determined by the investigator.

Restrictions: For Research Use only

Handling

Format: Liquid

Concentration: 1 mg/mL

Buffer: Liquid. Purified antibody supplied in 1x PBS buffer with 0.09 % (w/v) sodium azide and 2 % sucrose.

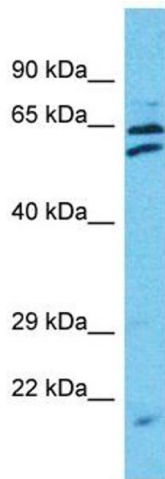
Preservative: Sodium azide

Precaution of Use: This product contains Sodium azide: a POISONOUS AND HAZARDOUS SUBSTANCE which should be handled by trained staff only.

Handling Advice: Avoid repeat freeze-thaw cycles.

Storage: -20 °C

Storage Comment: For short term use, store at 2-8°C up to 1 week. For long term storage, store at -20°C in small aliquots to prevent freeze-thaw cycles.



Western Blotting

Image 1.