



[Go to Product page](#)

Datasheet for ABIN2791972

anti-TUBA3D antibody (C-Term)

1 Image

Overview

Quantity:	100 µL
Target:	TUBA3D
Binding Specificity:	C-Term
Reactivity:	Human, Mouse, Rabbit, Rat, Sheep, Cow, Zebrafish (Danio rerio), Dog, Guinea Pig, Horse
Host:	Rabbit
Clonality:	Polyclonal
Conjugate:	This TUBA3D antibody is un-conjugated
Application:	Western Blotting (WB)

Product Details

Immunogen:	The immunogen is a synthetic peptide directed towards the C-terminal region of Human TUBA3D
Sequence:	YAKRAFVHWY VGEGMEEGEF SEAREDLAAL EKDYEEVGVD SVEAEAEERGE
Predicted Reactivity:	Cow: 100%, Dog: 100%, Guinea Pig: 100%, Horse: 100%, Human: 100%, Mouse: 100%, Rabbit: 100%, Rat: 100%, Sheep: 100%, Zebrafish: 100%
Characteristics:	This is a rabbit polyclonal antibody against TUBA3D. It was validated on Western Blot.
Purification:	Affinity Purified

Target Details

Target:	TUBA3D
---------	--------

Target Details

Alternative Name: TUBA3D ([TUBA3D Products](#))

Background: Microtubules of the eukaryotic cytoskeleton perform essential and diverse functions and are composed of a heterodimer of alpha and beta tubulin. The genes encoding these microtubule constituents are part of the tubulin superfamily, which is composed of six distinct families. Genes from the alpha, beta and gamma tubulin families are found in all eukaryotes. The alpha and beta tubulins represent the major components of microtubules, while gamma tubulin plays a critical role in the nucleation of microtubule assembly. There are multiple alpha and beta tubulin genes and they are highly conserved among and between species. This gene is an alpha tubulin gene that encodes a protein 99 % identical to the mouse testis-specific Tuba3 and Tuba7 gene products. This gene is located in the 13q11 region, which is associated with the genetic diseases Clouston hidrotic ectodermal dysplasia and Kabuki syndrome.

Alias Symbols: H2-ALPHA

Protein Interaction Partner: UBC, PARK2, CD81, UBL4A, CUL3, ELAVL1, VHL,

Protein Size: 450

Molecular Weight: 50 kDa

Gene ID: 113457

NCBI Accession: [NM_080386](#), [NP_525125](#)

UniProt: [Q13748](#)

Application Details

Application Notes: Optimal working dilution should be determined by the investigator.

Restrictions: For Research Use only

Handling

Format: Liquid

Concentration: 1 mg/mL

Buffer: Liquid. Purified antibody supplied in 1x PBS buffer with 0.09 % (w/v) sodium azide and 2 % sucrose.

Preservative: Sodium azide

Precaution of Use: This product contains Sodium azide: a POISONOUS AND HAZARDOUS SUBSTANCE which should be handled by trained staff only.

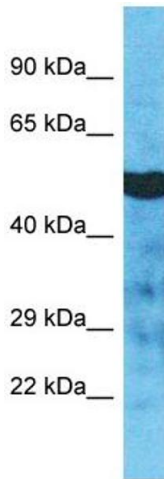
Handling

Handling Advice: Avoid repeat freeze-thaw cycles.

Storage: -20 °C

Storage Comment: For short term use, store at 2-8°C up to 1 week. For long term storage, store at -20°C in small aliquots to prevent freeze-thaw cycles.

Images



Western Blotting

Image 1. Host: Rabbit Target Name: TUBA3D Sample Type: Jurkat Whole Cell lysates Antibody Dilution: 1.0ug/ml
TUBA3D is supported by BioGPS gene expression data to be expressed in Jurkat