

Datasheet for ABIN2791974
anti-NME9 antibody (Middle Region)[Go to Product page](#)

1 Image

Overview

Quantity:	100 µL
Target:	NME9
Binding Specificity:	Middle Region
Reactivity:	Human, Cow
Host:	Rabbit
Clonality:	Polyclonal
Conjugate:	This NME9 antibody is un-conjugated
Application:	Western Blotting (WB)

Product Details

Immunogen:	The immunogen is a synthetic peptide directed towards the middle region of Human NME9
Sequence:	AEGRRERKVIK DEALSDEDEC VSHGKNNGED EDMVSSERTC TLAIKPDVA
Predicted Reactivity:	Cow: 79%, Human: 100%
Characteristics:	This is a rabbit polyclonal antibody against NME9. It was validated on Western Blot.
Purification:	Affinity Purified

Target Details

Target:	NME9
Alternative Name:	NME9 (NME9 Products)
Background:	NME9 may be a regulator of microtubule physiology.

Target Details

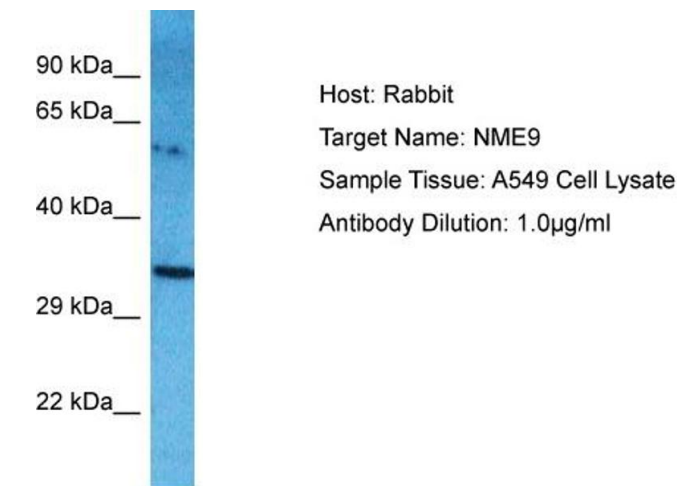
	Protein Interaction Partner: SUMO4, Protein Size: 330
Molecular Weight:	36 kDa
Gene ID:	347736
UniProt:	Q86XW9
Pathways:	Ribonucleoside Biosynthetic Process , Cell RedoxHomeostasis

Application Details

Restrictions:	For Research Use only
---------------	-----------------------

Handling

Format:	Liquid
Concentration:	1 mg/mL
Buffer:	Liquid. Purified antibody supplied in 1x PBS buffer with 0.09 % (w/v) sodium azide and 2 % sucrose.
Preservative:	Sodium azide
Precaution of Use:	This product contains Sodium azide: a POISONOUS AND HAZARDOUS SUBSTANCE which should be handled by trained staff only.
Handling Advice:	Avoid repeat freeze-thaw cycles.
Storage:	-20 °C
Storage Comment:	For short term use, store at 2-8°C up to 1 week. For long term storage, store at -20°C in small aliquots to prevent freeze-thaw cycles.



Western Blotting

Image 1. Host: Rabbit Target Name: NME9 Sample Type: A549 Whole Cell lysates Antibody Dilution: 1.0ug/ml