

Datasheet for ABIN2791984
anti-WDR31 antibody (Middle Region)[Go to Product page](#)

1 Image

Overview

Quantity:	100 µL
Target:	WDR31
Binding Specificity:	Middle Region
Reactivity:	Human, Rat, Cow, Guinea Pig, Mouse
Host:	Rabbit
Clonality:	Polyclonal
Conjugate:	This WDR31 antibody is un-conjugated
Application:	Western Blotting (WB)

Product Details

Immunogen:	The immunogen is a synthetic peptide directed towards the middle region of Human WDR31
Sequence:	MWDLHGSSQP RQQLCGHAMV VTGLAVSPDS SQLCTGSRDN TLLLWDVVTG
Predicted Reactivity:	Cow: 82%, Guinea Pig: 100%, Human: 100%, Mouse: 79%, Rat: 92%
Characteristics:	This is a rabbit polyclonal antibody against WDR31. It was validated on Western Blot.
Purification:	Affinity Purified

Target Details

Target:	WDR31
Alternative Name:	WDR31 (WDR31 Products)
Background:	This gene encodes a member of the WD repeat protein family. WD repeats are minimally

Target Details

conserved regions of approximately 40 amino acids typically bracketed by gly-his and trp-aspartate (GH-WD), which may facilitate formation of heterotrimeric or multiprotein complexes. Members of this family are involved in a variety of cellular processes, including cell cycle progression, signal transduction, apoptosis, and gene regulation. Multiple alternatively spliced transcript variants encoding distinct isoforms have been found for this gene but the biological validity of some variants has not been determined.

Alias Symbols: -

Protein Size: 366

Molecular Weight: 40 kDa

Gene ID: 114987

NCBI Accession: [NM_145241](#), [NP_660284](#)

Application Details

Application Notes: Optimal working dilution should be determined by the investigator.

Restrictions: For Research Use only

Handling

Format: Liquid

Concentration: 1 mg/mL

Buffer: Liquid. Purified antibody supplied in 1x PBS buffer with 0.09 % (w/v) sodium azide and 2 % sucrose.

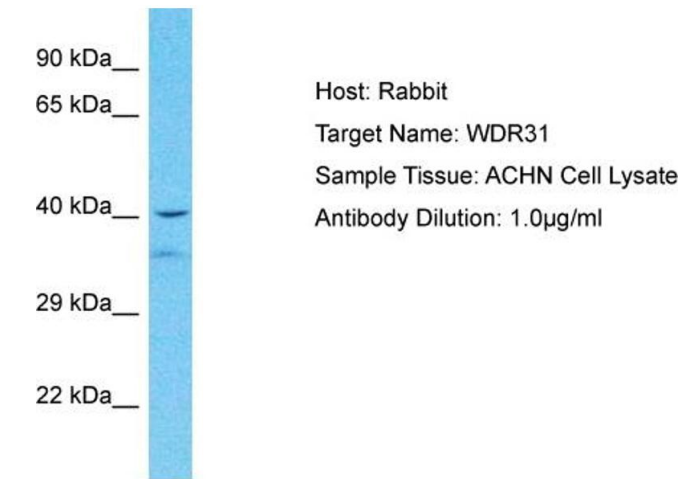
Preservative: Sodium azide

Precaution of Use: This product contains Sodium azide: a POISONOUS AND HAZARDOUS SUBSTANCE which should be handled by trained staff only.

Handling Advice: Avoid repeat freeze-thaw cycles.

Storage: -20 °C

Storage Comment: For short term use, store at 2-8°C up to 1 week. For long term storage, store at -20°C in small aliquots to prevent freeze-thaw cycles.



Western Blotting

Image 1. Host: Rabbit Target Name: WDR31 Sample Tissue: Human ACHN Whole Cell Antibody Dilution: 1ug/ml