



[Go to Product page](#)

Datasheet for ABIN2791997
anti-ZDHHC22 antibody (C-Term)

1 Image

Overview

Quantity:	100 µL
Target:	ZDHHC22
Binding Specificity:	C-Term
Reactivity:	Human, Cow, Dog, Guinea Pig, Horse, Mouse, Pig, Rabbit, Rat
Host:	Rabbit
Clonality:	Polyclonal
Conjugate:	This ZDHHC22 antibody is un-conjugated
Application:	Western Blotting (WB)

Product Details

Immunogen:	The immunogen is a synthetic peptide directed towards the C-terminal region of Human ZDHHC22
Sequence:	QTRHQVRKGV AVRARPWRKN LQEVFGKRWL LGLLVPMFNV GSESSKQQDK
Predicted Reactivity:	Cow: 86%, Dog: 86%, Guinea Pig: 86%, Horse: 86%, Human: 100%, Mouse: 93%, Pig: 93%, Rabbit: 93%, Rat: 93%
Characteristics:	This is a rabbit polyclonal antibody against ZDHHC22. It was validated on Western Blot.
Purification:	Affinity Purified

Target Details

Target:	ZDHHC22
---------	---------

Target Details

Alternative Name: ZDHHC22 ([ZDHHC22 Products](#))

Background: The function of this protein remains unknown.
Alias Symbols: C14orf59
Protein Interaction Partner: TRIM59,
Protein Size: 263

Molecular Weight: 28 kDa

Gene ID: 283576

NCBI Accession: [NM_174976](#), [NP_777636](#)

UniProt: [Q8N966](#)

Application Details

Application Notes: Optimal working dilution should be determined by the investigator.

Restrictions: For Research Use only

Handling

Format: Liquid

Concentration: 1 mg/mL

Buffer: Liquid. Purified antibody supplied in 1x PBS buffer with 0.09 % (w/v) sodium azide and 2 % sucrose.

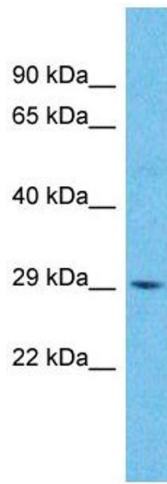
Preservative: Sodium azide

Precaution of Use: This product contains Sodium azide: a POISONOUS AND HAZARDOUS SUBSTANCE which should be handled by trained staff only.

Handling Advice: Avoid repeat freeze-thaw cycles.

Storage: -20 °C

Storage Comment: For short term use, store at 2-8°C up to 1 week. For long term storage, store at -20°C in small aliquots to prevent freeze-thaw cycles.



Western Blotting

Image 1.