



[Go to Product page](#)

Datasheet for ABIN2792000
anti-SHISA7 antibody (Middle Region)

1 Image

Overview

Quantity:	100 µL
Target:	SHISA7
Binding Specificity:	Middle Region
Reactivity:	Human, Mouse, Horse, Rat, Cow, Dog, Guinea Pig
Host:	Rabbit
Clonality:	Polyclonal
Conjugate:	This SHISA7 antibody is un-conjugated
Application:	Western Blotting (WB)

Product Details

Immunogen:	The immunogen is a synthetic peptide directed towards the middle region of Human SHISA7
Sequence:	INVPRALVDI LRHQAGPGTR PDRARSSSLT PGIGGPDSMP PRTPKNLYNT
Predicted Reactivity:	Cow: 93%, Dog: 100%, Guinea Pig: 100%, Horse: 100%, Human: 100%, Mouse: 93%, Rat: 93%
Characteristics:	This is a rabbit polyclonal antibody against SHISA7. It was validated on Western Blot.
Purification:	Affinity Purified

Target Details

Target:	SHISA7
Alternative Name:	SHISA7 (SHISA7 Products)
Background:	The function of this protein remains unknown.

Target Details

Alias Symbols: -

Protein Size: 538

Molecular Weight: 59 kDa

Gene ID: 729956

NCBI Accession: [NM_001145176](#), [NP_001138648](#)

UniProt: [A6NL88](#)

Application Details

Application Notes: Optimal working dilution should be determined by the investigator.

Restrictions: For Research Use only

Handling

Format: Liquid

Concentration: 1 mg/mL

Buffer: Liquid. Purified antibody supplied in 1x PBS buffer with 0.09 % (w/v) sodium azide and 2 % sucrose.

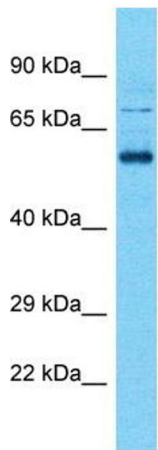
Preservative: Sodium azide

Precaution of Use: This product contains Sodium azide: a POISONOUS AND HAZARDOUS SUBSTANCE which should be handled by trained staff only.

Handling Advice: Avoid repeat freeze-thaw cycles.

Storage: -20 °C

Storage Comment: For short term use, store at 2-8°C up to 1 week. For long term storage, store at -20°C in small aliquots to prevent freeze-thaw cycles.



Host: Rabbit
Target Name: SHISA7
Sample Tissue: OVCAR-3 Cell Lysate
Antibody Dilution: 1.0µg/ml

Western Blotting

Image 1. Host: Rabbit Target Name: SHISA7 Sample
Tissue: Human OVCAR-3 Whole Cell Antibody Dilution:
1ug/ml