



[Go to Product page](#)

Datasheet for ABIN2792009  
**anti-CC2D2B antibody (Middle Region)**

1 Image

### Overview

Quantity:	100 µL
Target:	CC2D2B
Binding Specificity:	Middle Region
Reactivity:	Human, Rat, Saccharomyces cerevisiae, Cow, Dog, Pig, Rabbit
Host:	Rabbit
Clonality:	Polyclonal
Conjugate:	This CC2D2B antibody is un-conjugated
Application:	Western Blotting (WB)

### Product Details

Immunogen:	The immunogen is a synthetic peptide directed towards the middle region of Human C10orf131
Sequence:	EEEEFMKEFI LTDILKVKAA DYEDDQEIQ KQKANIFVPS SSPVVNQRKL
Predicted Reactivity:	Cow: 85%, Dog: 85%, Human: 100%, Pig: 92%, Rabbit: 85%, Rat: 85%, Yeast: 79%
Characteristics:	This is a rabbit polyclonal antibody against C10orf131. It was validated on Western Blot.
Purification:	Affinity Purified

### Target Details

Target:	CC2D2B
Alternative Name:	C10orf131 ( <a href="#">CC2D2B Products</a> )
Background:	The function of this protein remains unknown.

## Target Details

---

Protein Size: 256

Molecular Weight: 28 kDa

Gene ID: 100127889

UniProt: [A6NCD4](#)

## Application Details

---

Restrictions: For Research Use only

## Handling

---

Format: Liquid

Concentration: 1 mg/mL

Buffer: Liquid. Purified antibody supplied in 1x PBS buffer with 0.09 % (w/v) sodium azide and 2 % sucrose.

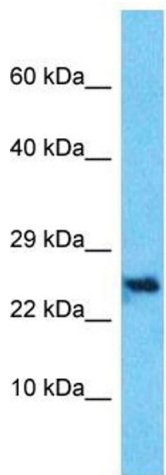
Preservative: Sodium azide

Precaution of Use: This product contains Sodium azide: a POISONOUS AND HAZARDOUS SUBSTANCE which should be handled by trained staff only.

Handling Advice: Avoid repeat freeze-thaw cycles.

Storage: -20 °C

Storage Comment: For short term use, store at 2-8°C up to 1 week. For long term storage, store at -20°C in small aliquots to prevent freeze-thaw cycles.



Host: Rabbit  
Target Name: C10orf131  
Sample Tissue: HepG2 Cell Lysate  
Antibody Dilution: 1.0µg/ml

### Western Blotting

**Image 1.** Host: Rabbit Target Name: C10orf131 Sample Type: HepG2 Whole Cell lysates Antibody Dilution: 1.0ug/ml