

Datasheet for ABIN2792010  
**anti-C11orf91 antibody (C-Term)**[Go to Product page](#)

## 1 Image

## Overview

Quantity:	100 µL
Target:	C11orf91 (C11ORF91)
Binding Specificity:	C-Term
Reactivity:	Human, Mouse, Pig, Rabbit, Rat, Cow, Dog, Guinea Pig, Horse
Host:	Rabbit
Clonality:	Polyclonal
Conjugate:	This C11orf91 antibody is un-conjugated
Application:	Western Blotting (WB)

## Product Details

Immunogen:	The immunogen is a synthetic peptide directed towards the C-terminal region of Human C11orf91
Sequence:	LCELEIRIKE LELLTITGDG FDSQSYTFLK ALKDEKLQGL KTKQPGKKSA
Predicted Reactivity:	Cow: 93%, Dog: 86%, Guinea Pig: 92%, Horse: 93%, Human: 100%, Mouse: 93%, Pig: 93%, Rabbit: 100%, Rat: 93%
Characteristics:	This is a rabbit polyclonal antibody against C11orf91. It was validated on Western Blot.
Purification:	Affinity Purified

## Target Details

Target:	C11orf91 (C11ORF91)
---------	---------------------

## Target Details

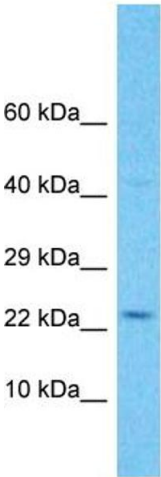
Alternative Name:	C11orf91 ( <a href="#">C11ORF91 Products</a> )
Background:	The function of this protein remains unknown. Alias Symbols: - Protein Size: 193
Molecular Weight:	21 kDa
Gene ID:	100131378
NCBI Accession:	<a href="#">NP_001160164</a>
UniProt:	<a href="#">Q3C1V1</a>

## Application Details

Restrictions:	For Research Use only
---------------	-----------------------

## Handling

Format:	Liquid
Concentration:	1 mg/mL
Buffer:	Liquid. Purified antibody supplied in 1x PBS buffer with 0.09 % (w/v) sodium azide and 2 % sucrose.
Preservative:	Sodium azide
Precaution of Use:	This product contains Sodium azide: a POISONOUS AND HAZARDOUS SUBSTANCE which should be handled by trained staff only.
Handling Advice:	Avoid repeat freeze-thaw cycles.
Storage:	-20 °C
Storage Comment:	For short term use, store at 2-8°C up to 1 week. For long term storage, store at -20°C in small aliquots to prevent freeze-thaw cycles.



Host: Rabbit  
Target Name: C11orf91  
Sample Tissue: Jurkat Cell Lysate  
Antibody Dilution: 1.0µg/ml

Western Blotting

**Image 1.** Host: Rabbit Target Name: C11orf91 Sample Type: Jurkat Whole Cell lysates Antibody Dilution: 1.0ug/ml