

Datasheet for ABIN2792011
anti-SOHLH2 antibody (N-Term)



[Go to Product page](#)

1 Image

Overview

Quantity:	100 µL
Target:	SOHLH2
Binding Specificity:	N-Term
Reactivity:	Human, Dog, Guinea Pig, Mouse, Horse
Host:	Rabbit
Clonality:	Polyclonal
Conjugate:	This SOHLH2 antibody is un-conjugated
Application:	Western Blotting (WB)

Product Details

Immunogen:	The immunogen is a synthetic peptide directed towards the N-terminal region of Human SOHLH2
Sequence:	ALKLEQESKA YQKINNERRT YLAEMSQGSQ LHQVSKRQQV DQLPRMQENL
Predicted Reactivity:	Dog: 79%, Guinea Pig: 91%, Horse: 79%, Human: 100%, Mouse: 75%
Characteristics:	This is a rabbit polyclonal antibody against SOHLH2. It was validated on Western Blot.
Purification:	Affinity Purified

Target Details

Target:	SOHLH2
Alternative Name:	SOHLH2 (SOHLH2 Products)

Target Details

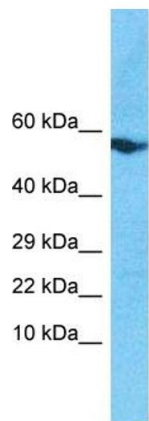
Background:	SOHLH2 is the probable transcription factor, which may be involved in spermatogenesis and oogenesis. Protein Interaction Partner: UBC, TCEB3B, Protein Size: 502
Molecular Weight:	55 kDa
Gene ID:	54937

Application Details

Application Notes:	Optimal working dilution should be determined by the investigator.
Restrictions:	For Research Use only

Handling

Format:	Liquid
Concentration:	1 mg/mL
Buffer:	Liquid. Purified antibody supplied in 1x PBS buffer with 0.09 % (w/v) sodium azide and 2 % sucrose.
Preservative:	Sodium azide
Precaution of Use:	This product contains Sodium azide: a POISONOUS AND HAZARDOUS SUBSTANCE which should be handled by trained staff only.
Handling Advice:	Avoid repeat freeze-thaw cycles.
Storage:	-20 °C
Storage Comment:	For short term use, store at 2-8°C up to 1 week. For long term storage, store at -20°C in small aliquots to prevent freeze-thaw cycles.



Host: Rabbit
Target Name: SOHLH2
Sample Tissue: MDA-MB-435s Cell Lysate
Antibody Dilution: 1.0µg/ml

Western Blotting

Image 1. Host: Rabbit Target Name: SOHLH2 Sample

Tissue: Human MDA-MB-435s Whole Cell Antibody

Dilution: 1ug/ml