



[Go to Product page](#)

Datasheet for ABIN2792018

## anti-TMEM236 antibody (Middle Region)

### 1 Image

#### Overview

Quantity:	100 µL
Target:	TMEM236
Binding Specificity:	Middle Region
Reactivity:	Human, Cow, Guinea Pig, Horse
Host:	Rabbit
Clonality:	Polyclonal
Conjugate:	This TMEM236 antibody is un-conjugated
Application:	Western Blotting (WB)

#### Product Details

Immunogen:	The immunogen is a synthetic peptide directed towards the middle region of Human TMEM236
Sequence:	YPLRGSQKSS ENGHIIHSTSL QHIKTVTEQV RQSPENAASP QATNSTQVSQ
Predicted Reactivity:	Cow: 75%, Guinea Pig: 75%, Horse: 75%, Human: 100%
Characteristics:	This is a rabbit polyclonal antibody against TMEM236. It was validated on Western Blot.
Purification:	Affinity Purified

#### Target Details

Target:	TMEM236
Alternative Name:	TMEM236 ( <a href="#">TMEM236 Products</a> )
Background:	The function of this protein remains unknown.

## Target Details

---

Protein Size: 351

Molecular Weight: 38 kDa

Gene ID: 653567

NCBI Accession: [XP\\_003959978](#)

UniProt: [Q5W0B7](#)

## Application Details

---

Application Notes: Optimal working dilution should be determined by the investigator.

Restrictions: For Research Use only

## Handling

---

Format: Liquid

Concentration: 1 mg/mL

Buffer: Liquid. Purified antibody supplied in 1x PBS buffer with 0.09 % (w/v) sodium azide and 2 % sucrose.

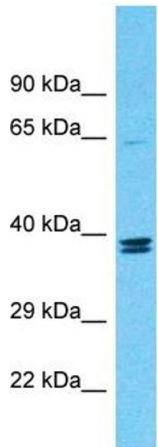
Preservative: Sodium azide

Precaution of Use: This product contains Sodium azide: a POISONOUS AND HAZARDOUS SUBSTANCE which should be handled by trained staff only.

Handling Advice: Avoid repeat freeze-thaw cycles.

Storage: -20 °C

Storage Comment: For short term use, store at 2-8°C up to 1 week. For long term storage, store at -20°C in small aliquots to prevent freeze-thaw cycles.



Host: Rabbit  
Target Name: TMEM236  
Sample Tissue: COLO205 Cell Lysate  
Antibody Dilution: 1.0µg/ml

### Western Blotting

**Image 1.** Host: Rabbit Target Name: TMEM236 Sample  
Tissue: Human COLO205 Whole Cell Antibody Dilution:  
1ug/ml