



[Go to Product page](#)

Datasheet for ABIN2792020
anti-FAM47E antibody (C-Term)

1 Image

Overview

Quantity:	100 µL
Target:	FAM47E
Binding Specificity:	C-Term
Reactivity:	Human, Mouse, Pig, Rabbit, Rat, Cow, Dog, Horse
Host:	Rabbit
Clonality:	Polyclonal
Conjugate:	This FAM47E antibody is un-conjugated
Application:	Western Blotting (WB)

Product Details

Immunogen:	The immunogen is a synthetic peptide directed towards the C-terminal region of Human FAM47E
Sequence:	RYGAWYLNPK LWKKQRVDEP LVDPEVSHKA QEENFKKELQ EQSIFKKAMD
Predicted Reactivity:	Cow: 93%, Dog: 86%, Horse: 75%, Human: 100%, Mouse: 75%, Pig: 75%, Rabbit: 75%, Rat: 75%
Characteristics:	This is a rabbit polyclonal antibody against FAM47E. It was validated on Western Blot.
Purification:	Affinity Purified

Target Details

Target:	FAM47E
Alternative Name:	FAM47E (FAM47E Products)

Target Details

Background: The function of this protein remains unknown.
Protein Size: 351

Molecular Weight: 38 kDa

Gene ID: 100129583

NCBI Accession: [NP_001229868](#)

Application Details

Restrictions: For Research Use only

Handling

Format: Liquid

Concentration: 1 mg/mL

Buffer: Liquid. Purified antibody supplied in 1x PBS buffer with 0.09 % (w/v) sodium azide and 2 % sucrose.

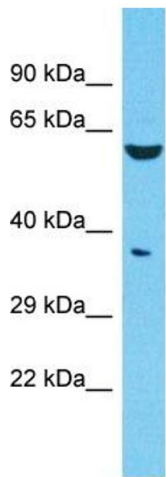
Preservative: Sodium azide

Precaution of Use: This product contains Sodium azide: a POISONOUS AND HAZARDOUS SUBSTANCE which should be handled by trained staff only.

Handling Advice: Avoid repeat freeze-thaw cycles.

Storage: -20 °C

Storage Comment: For short term use, store at 2-8°C up to 1 week. For long term storage, store at -20°C in small aliquots to prevent freeze-thaw cycles.



Host: Rabbit
Target Name: FAM47E
Sample Tissue: 721_B Cell Lysate
Antibody Dilution: 1.0µg/ml

Western Blotting

Image 1. Host: Rabbit Target Name: FAM47E Sample Type: 721_B Whole Cell lysates Antibody Dilution: 1.0ug/ml