



[Go to Product page](#)

Datasheet for ABIN2792025  
**anti-FAM166B antibody (Middle Region)**

1 Image

### Overview

Quantity:	100 µL
Target:	FAM166B
Binding Specificity:	Middle Region
Reactivity:	Human, Cow, Pig
Host:	Rabbit
Clonality:	Polyclonal
Conjugate:	This FAM166B antibody is un-conjugated
Application:	Western Blotting (WB)

### Product Details

Immunogen:	The immunogen is a synthetic peptide directed towards the middle region of Human FAM166B
Sequence:	QFIFAKNCSQ VWAEALSDFT HLHEKQGSEE LPKEAKGRKD TEKDQVPEPE
Predicted Reactivity:	Cow: 91%, Human: 100%, Pig: 91%
Characteristics:	This is a rabbit polyclonal antibody against FAM166B. It was validated on Western Blot.
Purification:	Affinity Purified

### Target Details

Target:	FAM166B
Alternative Name:	FAM166B ( <a href="#">FAM166B Products</a> )
Background:	The function of this protein remains unknown.

## Target Details

---

Protein Size: 275

Molecular Weight: 30 kDa

Gene ID: 730112

NCBI Accession: [NP\\_001157782](#)

UniProt: [A8MTA8](#)

## Application Details

---

Restrictions: For Research Use only

## Handling

---

Format: Liquid

Concentration: 1 mg/mL

Buffer: Liquid. Purified antibody supplied in 1x PBS buffer with 0.09 % (w/v) sodium azide and 2 % sucrose.

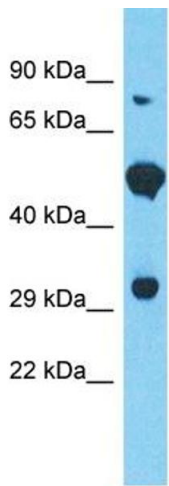
Preservative: Sodium azide

Precaution of Use: This product contains Sodium azide: a POISONOUS AND HAZARDOUS SUBSTANCE which should be handled by trained staff only.

Handling Advice: Avoid repeat freeze-thaw cycles.

Storage: -20 °C

Storage Comment: For short term use, store at 2-8°C up to 1 week. For long term storage, store at -20°C in small aliquots to prevent freeze-thaw cycles.



Host: Rabbit  
Target Name: FAM166B  
Sample Tissue: 293T Cell Lysate  
Antibody Dilution: 1.0µg/ml

### Western Blotting

**Image 1.** Host: Rabbit Target Name: FAM166B Sample  
Tissue: Human 293T Whole Cell Antibody Dilution: 1 ug/ml