



[Go to Product page](#)

Datasheet for ABIN2792030

anti-DENND11/KIAA1147 antibody (C-Term)

1 Image

Overview

Quantity:	100 µL
Target:	DENND11/KIAA1147 (DENND11)
Binding Specificity:	C-Term
Reactivity:	Human, Mouse, Rat, Cow, Guinea Pig, Horse, Dog, Rabbit, Zebrafish (Danio rerio)
Host:	Rabbit
Clonality:	Polyclonal
Conjugate:	This DENND11/KIAA1147 antibody is un-conjugated
Application:	Western Blotting (WB)

Product Details

Immunogen:	The immunogen is a synthetic peptide directed towards the C-terminal region of human KIAA1147
Sequence:	TTEKIFEEKR ELYDVYVDNQ NVKTHHDHLQ PLLKINSADR EKYRRLNEQR
Predicted Reactivity:	Cow: 100%, Dog: 100%, Guinea Pig: 100%, Horse: 100%, Human: 100%, Mouse: 100%, Rabbit: 100%, Rat: 100%, Zebrafish: 91%
Characteristics:	This is a rabbit polyclonal antibody against KIAA1147. It was validated on Western Blot.
Purification:	Affinity Purified

Target Details

Target:	DENND11/KIAA1147 (DENND11)
---------	----------------------------

Target Details

Alternative Name: KIAA1147 ([DENND11 Products](#))

Background: Alias Symbols: LCHN, PRO2561
Protein Size: 351

Molecular Weight: 38 kDa

Gene ID: 57189

NCBI Accession: [NM_001080392](#), [NP_001073861](#)

UniProt: [A4D1U4](#)

Application Details

Application Notes: Optimal working dilution should be determined by the investigator.

Restrictions: For Research Use only

Handling

Format: Liquid

Concentration: 1 mg/mL

Buffer: Liquid. Purified antibody supplied in 1x PBS buffer with 0.09 % (w/v) sodium azide and 2 % sucrose.

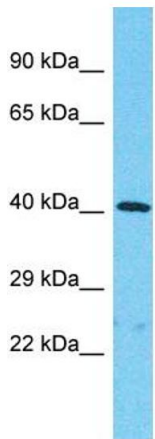
Preservative: Sodium azide

Precaution of Use: This product contains Sodium azide: a POISONOUS AND HAZARDOUS SUBSTANCE which should be handled by trained staff only.

Handling Advice: Avoid repeat freeze-thaw cycles.

Storage: -20 °C

Storage Comment: For short term use, store at 2-8°C up to 1 week. For long term storage, store at -20°C in small aliquots to prevent freeze-thaw cycles.



Host: Rabbit
Target Name: KIAA1147
Sample Tissue: RPMI-8226 Cell Lysate
Antibody Dilution: 1.0µg/ml

Western Blotting

Image 1. Host: Rabbit Target Name: KIAA1147 Sample
Tissue: Human RPMI-8226 Whole Cell Antibody Dilution:
1ug/ml