

Datasheet for ABIN2792039
anti-RFX8 antibody (C-Term)[Go to Product page](#)

1 Image

Overview

Quantity:	100 µL
Target:	RFX8
Binding Specificity:	C-Term
Reactivity:	Human
Host:	Rabbit
Clonality:	Polyclonal
Conjugate:	This RFX8 antibody is un-conjugated
Application:	Western Blotting (WB)

Product Details

Immunogen:	The immunogen is a synthetic peptide directed towards the C-terminal region of Human RFX8
Sequence:	AIINQGTLAT SKKALASDRS GADELENNPE MKCLRNLI SL LGTSTDLRVF
Predicted Reactivity:	Human: 100%
Characteristics:	This is a rabbit polyclonal antibody against RFX8. It was validated on Western Blot.
Purification:	Affinity Purified

Target Details

Target:	RFX8
Alternative Name:	RFX8 (RFX8 Products)
Background:	RFX8 may be a transcription factor.

Target Details

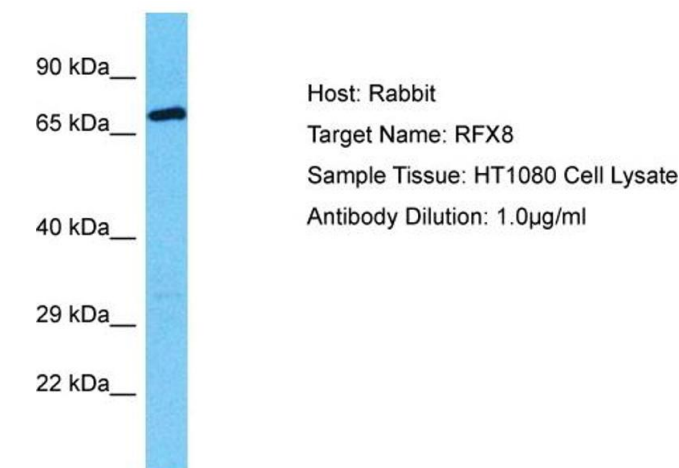
	Protein Size: 586
Molecular Weight:	64 kDa
Gene ID:	731220
UniProt:	Q6ZV50

Application Details

Application Notes:	Optimal working dilution should be determined by the investigator.
Restrictions:	For Research Use only

Handling

Format:	Liquid
Concentration:	1 mg/mL
Buffer:	Liquid. Purified antibody supplied in 1x PBS buffer with 0.09 % (w/v) sodium azide and 2 % sucrose.
Preservative:	Sodium azide
Precaution of Use:	This product contains Sodium azide: a POISONOUS AND HAZARDOUS SUBSTANCE which should be handled by trained staff only.
Handling Advice:	Avoid repeat freeze-thaw cycles.
Storage:	-20 °C
Storage Comment:	For short term use, store at 2-8°C up to 1 week. For long term storage, store at -20°C in small aliquots to prevent freeze-thaw cycles.



Western Blotting

Image 1. Host: Rabbit Target Name: RFX8 Sample Tissue: Human HT1080 Whole Cell Antibody Dilution: 1ug/ml