

Datasheet for ABIN2792044
anti-ZNF254 antibody (Middle Region)[Go to Product page](#)

1 Image

Overview

| | |
|----------------------|---------------------------------------|
| Quantity: | 100 µL |
| Target: | ZNF254 |
| Binding Specificity: | Middle Region |
| Reactivity: | Human, Rat, Cow, Dog, Horse, Mouse |
| Host: | Rabbit |
| Clonality: | Polyclonal |
| Conjugate: | This ZNF254 antibody is un-conjugated |
| Application: | Western Blotting (WB) |

Product Details

| | |
|-----------------------|---|
| Immunogen: | The immunogen is a synthetic peptide directed towards the middle region of Human ZNF254 |
| Sequence: | WSSTLTNHRK IYTEEKPYKC EEYNKSPKQL STLTTHEIIH AGEKLYKCEE |
| Predicted Reactivity: | Cow: 93%, Dog: 93%, Horse: 93%, Human: 100%, Mouse: 86%, Rat: 86% |
| Characteristics: | This is a rabbit polyclonal antibody against ZNF254. It was validated on Western Blot. |
| Purification: | Affinity Purified |

Target Details

| | |
|-------------------|--|
| Target: | ZNF254 |
| Alternative Name: | ZNF254 (ZNF254 Products) |
| Background: | ZNF254 is a Zinc Finger protein. Zinc finger proteins have been shown to interact with nucleic |

Target Details

acids and to have diverse functions. The zinc finger domain is a conserved amino acid sequence motif containing 2 specifically positioned cysteines and 2 histidines that are involved in coordinating zinc. Kruppel-related proteins form 1 family of zinc finger proteins.

Protein Interaction Partner: UBC,

Protein Size: 351

Molecular Weight: 38 kDa

Gene ID: 9534

Application Details

Application Notes: Optimal working dilution should be determined by the investigator.

Restrictions: For Research Use only

Handling

Format: Liquid

Concentration: 1 mg/mL

Buffer: Liquid. Purified antibody supplied in 1x PBS buffer with 0.09 % (w/v) sodium azide and 2 % sucrose.

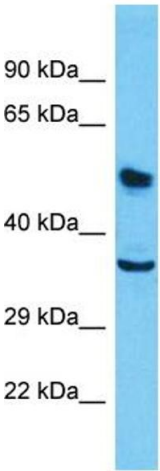
Preservative: Sodium azide

Precaution of Use: This product contains Sodium azide: a POISONOUS AND HAZARDOUS SUBSTANCE which should be handled by trained staff only.

Handling Advice: Avoid repeat freeze-thaw cycles.

Storage: -20 °C

Storage Comment: For short term use, store at 2-8°C up to 1 week. For long term storage, store at -20°C in small aliquots to prevent freeze-thaw cycles.



Host: Rabbit
Target Name: ZNF254
Sample Tissue: HepG2 Cell Lysate
Antibody Dilution: 1.0µg/ml

Western Blotting

Image 1. Host: Rabbit Target Name: ZNF254 Sample Type: HepG2 Whole Cell lysates Antibody Dilution: 1.0ug/ml