

Datasheet for ABIN2792046

anti-ZNF286A antibody (N-Term)[Go to Product page](#)**1** Image

Overview

Quantity:	100 µL
Target:	ZNF286A
Binding Specificity:	N-Term
Reactivity:	Human, Cow, Mouse, Rabbit, Rat, Horse, Guinea Pig, Dog
Host:	Rabbit
Clonality:	Polyclonal
Conjugate:	This ZNF286A antibody is un-conjugated
Application:	Western Blotting (WB)

Product Details

Immunogen:	The immunogen is a synthetic peptide directed towards the N-terminal region of human ZNF286A
Sequence:	KSNLMKKQRT YKEKKPHKCN DCGELFTYHS VLIRHQRVHT GEKPYTCNEC
Predicted Reactivity:	Cow: 100%, Dog: 93%, Guinea Pig: 100%, Horse: 100%, Human: 100%, Mouse: 86%, Rabbit: 93%, Rat: 100%
Characteristics:	This is a rabbit polyclonal antibody against ZNF286A. It was validated on Western Blot.
Purification:	Affinity Purified

Target Details

Target:	ZNF286A
---------	---------

Target Details

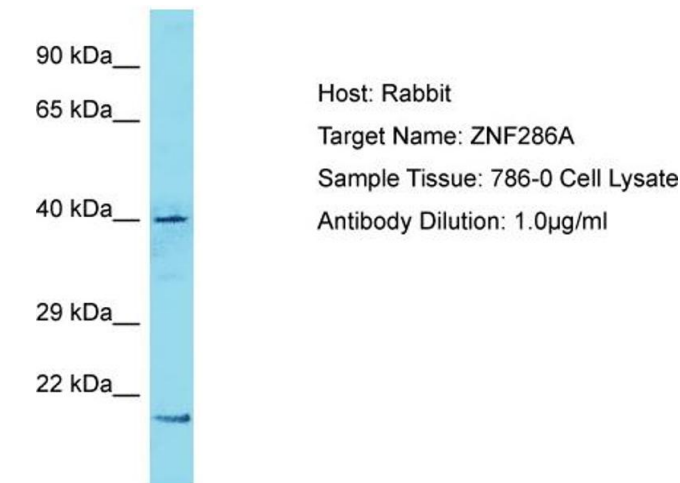
Alternative Name:	ZNF286A (ZNF286A Products)
Background:	Alias Symbols: ZNF286 Protein Size: 409
Molecular Weight:	44 kDa
Gene ID:	57335
NCBI Accession:	NM_001288645 , NP_001275574
UniProt:	A1A525

Application Details

Application Notes:	Optimal working dilution should be determined by the investigator.
Restrictions:	For Research Use only

Handling

Format:	Liquid
Concentration:	1 mg/mL
Buffer:	Liquid. Purified antibody supplied in 1x PBS buffer with 0.09 % (w/v) sodium azide and 2 % sucrose.
Preservative:	Sodium azide
Precaution of Use:	This product contains Sodium azide: a POISONOUS AND HAZARDOUS SUBSTANCE which should be handled by trained staff only.
Handling Advice:	Avoid repeat freeze-thaw cycles.
Storage:	-20 °C
Storage Comment:	For short term use, store at 2-8°C up to 1 week. For long term storage, store at -20°C in small aliquots to prevent freeze-thaw cycles.



Western Blotting

Image 1. Host: Rabbit Target Name: ZNF286A Sample Tissue: Human 786-0 Whole Cell Antibody Dilution: 1ug/ml