



[Go to Product page](#)

Datasheet for ABIN2792047  
**anti-ZCCHC18 antibody (C-Term)**

1 Image

### Overview

Quantity:	100 µL
Target:	ZCCHC18
Binding Specificity:	C-Term
Reactivity:	Human, Cow, Dog, Guinea Pig, Horse, Mouse, Rabbit, Rat
Host:	Rabbit
Clonality:	Polyclonal
Conjugate:	This ZCCHC18 antibody is un-conjugated
Application:	Western Blotting (WB)

### Product Details

Immunogen:	The immunogen is a synthetic peptide directed towards the C-terminal region of Human ZCCHC18
Sequence:	SGGSGYKNDG PGNIRRARKR KYTTRCSYCG EEGHSKETCD NESNKAQVFE
Predicted Reactivity:	Cow: 100%, Dog: 93%, Guinea Pig: 100%, Horse: 93%, Human: 100%, Mouse: 86%, Rabbit: 100%, Rat: 86%
Characteristics:	This is a rabbit polyclonal antibody against ZCCHC18. It was validated on Western Blot.
Purification:	Affinity Purified

### Target Details

Target:	ZCCHC18
---------	---------

## Target Details

---

Alternative Name: ZCCHC18 ([ZCCHC18 Products](#))

---

Background: The function of this protein remains unknown.  
Alias Symbols: PNMA7B, SIZN2  
Protein Size: 403

---

Molecular Weight: 44 kDa

---

Gene ID: 644353

---

NCBI Accession: [NM\\_001143978](#), [NP\\_001137450](#)

---

UniProt: [P0CG32](#)

---

## Application Details

---

Application Notes: Optimal working dilution should be determined by the investigator.

---

Restrictions: For Research Use only

---

## Handling

---

Format: Liquid

---

Concentration: 1 mg/mL

---

Buffer: Liquid. Purified antibody supplied in 1x PBS buffer with 0.09 % (w/v) sodium azide and 2 % sucrose.

---

Preservative: Sodium azide

---

Precaution of Use: This product contains Sodium azide: a POISONOUS AND HAZARDOUS SUBSTANCE which should be handled by trained staff only.

---

Handling Advice: Avoid repeat freeze-thaw cycles.

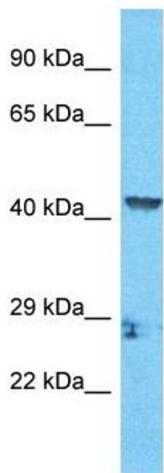
---

Storage: -20 °C

---

Storage Comment: For short term use, store at 2-8°C up to 1 week. For long term storage, store at -20°C in small aliquots to prevent freeze-thaw cycles.

---



Host: Rabbit  
Target Name: ZCCHC18  
Sample Tissue: HCT15 Cell Lysate  
Antibody Dilution: 1.0µg/ml

### Western Blotting

**Image 1.** Host: Rabbit Target Name: ZCCHC18 Sample  
Tissue: Human HCT15 Whole Cell Antibody Dilution:  
1ug/ml