



[Go to Product page](#)

Datasheet for ABIN2792048  
**anti-ZBTB8B antibody (C-Term)**

1 Image

Overview

Quantity:	100 µL
Target:	ZBTB8B
Binding Specificity:	C-Term
Reactivity:	Human, Dog, Guinea Pig, Rabbit, Horse, Mouse, Rat
Host:	Rabbit
Clonality:	Polyclonal
Conjugate:	This ZBTB8B antibody is un-conjugated
Application:	Western Blotting (WB)

Product Details

Immunogen:	The immunogen is a synthetic peptide directed towards the C-terminal region of Human ZBTB8B
Sequence:	LVEASSESQE KSDTDNDWPI YVESGEENDP AGDSDDKPQ IQPNLSDRET
Predicted Reactivity:	Dog: 93%, Guinea Pig: 79%, Horse: 86%, Human: 100%, Mouse: 79%, Rabbit: 86%, Rat: 86%
Characteristics:	This is a rabbit polyclonal antibody against ZBTB8B. It was validated on Western Blot.
Purification:	Affinity Purified

Target Details

Target:	ZBTB8B
Alternative Name:	ZBTB8B ( <a href="#">ZBTB8B Products</a> )

## Target Details

---

Background: ZBTB8B may be involved in transcriptional regulation.  
Alias Symbols: RP1-2705.1, ZNF916B  
Protein Interaction Partner: LSM7, PPIP5K2, CPSF6, PPIP5K1, KIF5B, ILF2, ZNF408, LNX1, CEP70, ZNF250, TRIM41, ZNF276, LMO3, MCM10, ZBTB8B, CCDC33, PAXIP1, KAT7, SMURF1, FXR2, AP1M1, DVL2, AP2M1, ZBTB48,  
Protein Size: 495

---

Molecular Weight: 54 kDa

---

Gene ID: 728116

---

NCBI Accession: [NM\\_001145720](#), [NP\\_001139192](#)

---

UniProt: [Q8NAP8](#)

---

## Application Details

---

Application Notes: Optimal working dilution should be determined by the investigator.

---

Restrictions: For Research Use only

---

## Handling

---

Format: Liquid

---

Concentration: 1 mg/mL

---

Buffer: Liquid. Purified antibody supplied in 1x PBS buffer with 0.09 % (w/v) sodium azide and 2 % sucrose.

---

Preservative: Sodium azide

---

Precaution of Use: This product contains Sodium azide: a POISONOUS AND HAZARDOUS SUBSTANCE which should be handled by trained staff only.

---

Handling Advice: Avoid repeat freeze-thaw cycles.

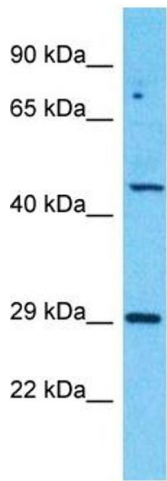
---

Storage: -20 °C

---

Storage Comment: For short term use, store at 2-8°C up to 1 week. For long term storage, store at -20°C in small aliquots to prevent freeze-thaw cycles.

---



Host: Rabbit  
Target Name: ZBTB8B  
Sample Tissue: MCF7 Cell Lysate  
Antibody Dilution: 1.0µg/ml

### Western Blotting

**Image 1.** Host: Rabbit Target Name: ZBTB8B Sample  
Tissue: Human MCF7 Whole Cell Antibody Dilution: 1ug/ml