

Datasheet for ABIN2792064
anti-SFI1 antibody (C-Term)[Go to Product page](#)

1 Image

Overview

Quantity:	100 µL
Target:	SFI1
Binding Specificity:	C-Term
Reactivity:	Human, Dog
Host:	Rabbit
Clonality:	Polyclonal
Conjugate:	This SFI1 antibody is un-conjugated
Application:	Western Blotting (WB)

Product Details

Immunogen:	The immunogen is a synthetic peptide directed towards the C-terminal region of Human SFI1
Sequence:	LELNTAHSAR KQPRRPHELL EPAQSQRPPK PQEHGLGMAQ PAAPSLTRPF
Predicted Reactivity:	Dog: 83%, Human: 100%
Characteristics:	This is a rabbit polyclonal antibody against SFI1. It was validated on Western Blot.
Purification:	Affinity Purified

Target Details

Target:	SFI1
Alternative Name:	SFI1 (SFI1 Products)
Background:	SFI1 plays a role in the dynamic structure of centrosome-associated contractile fibers via its

Target Details

interaction with CETN2.

Alias Symbols: PISD, hSfi1p

Protein Interaction Partner: FAM131C, CCDC57, CCDC120, SERTAD1, MAD2L2, SFI1, LPXN, GCSH, CRX, PPP1CA, RADIL, MDFI, CETN2, KRT19, CDC5L, ESR1,

Protein Size: 1211

Molecular Weight: 133 kDa

Gene ID: 9814

NCBI Accession: [NM_014775](#), [NP_055590](#)

Pathways: [M Phase](#)

Application Details

Application Notes: Optimal working dilution should be determined by the investigator.

Restrictions: For Research Use only

Handling

Format: Liquid

Concentration: 1 mg/mL

Buffer: Liquid. Purified antibody supplied in 1x PBS buffer with 0.09 % (w/v) sodium azide and 2 % sucrose.

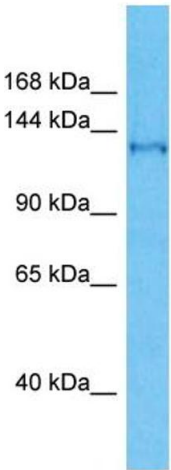
Preservative: Sodium azide

Precaution of Use: This product contains Sodium azide: a POISONOUS AND HAZARDOUS SUBSTANCE which should be handled by trained staff only.

Handling Advice: Avoid repeat freeze-thaw cycles.

Storage: -20 °C

Storage Comment: For short term use, store at 2-8°C up to 1 week. For long term storage, store at -20°C in small aliquots to prevent freeze-thaw cycles.



Host: Rabbit
Target Name: SFI1
Sample Tissue: Jurkat Cell Lysate
Antibody Dilution: 1.0µg/ml

Western Blotting

Image 1. Host: Rabbit Target Name: SFI1 Sample Type: Jurkat Whole Cell lysates Antibody Dilution: 1.0ug/ml