

Datasheet for ABIN2792072  
**anti-SLC7A8 antibody (N-Term)**[Go to Product page](#)

## 1 Image

## Overview

Quantity:	100 µL
Target:	SLC7A8
Binding Specificity:	N-Term
Reactivity:	Human, Cow, Horse
Host:	Rabbit
Clonality:	Polyclonal
Conjugate:	This SLC7A8 antibody is un-conjugated
Application:	Western Blotting (WB)

## Product Details

Immunogen:	The immunogen is a synthetic peptide directed towards the N-terminal region of Human SLC7A8
Sequence:	NNTEKKHPGG GESDASPEAG SGGGGVALKK EIGLVSACGI IVGNIIGSGI
Predicted Reactivity:	Cow: 85%, Horse: 79%, Human: 100%
Characteristics:	This is a rabbit polyclonal antibody against SLC7A8. It was validated on Western Blot.
Purification:	Affinity Purified

## Target Details

Target:	SLC7A8
Alternative Name:	SLC7A8 ( <a href="#">SLC7A8 Products</a> )

## Target Details

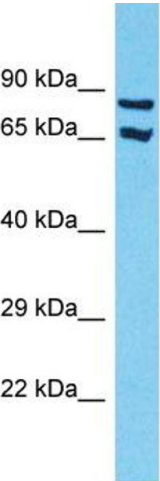
Background:	<p>SLC7A8 is sodium-independent, high-affinity transport of large neutral amino acids. It has higher affinity for L-phenylalanine than LAT1 but lower affinity for glutamine and serine. L-alanine is transported at physiological concentrations. SLC7A8 also plays a role in basolateral (re)absorption of neutral amino acids.</p> <p>Protein Interaction Partner: SLC3A1, UBC, SLC3A2,</p> <p>Protein Size: 535</p>
Molecular Weight:	58 kDa
Gene ID:	23428
UniProt:	<a href="#">Q9UHI5</a>

## Application Details

Application Notes:	Optimal working dilution should be determined by the investigator.
Restrictions:	For Research Use only

## Handling

Format:	Liquid
Concentration:	1 mg/mL
Buffer:	Liquid. Purified antibody supplied in 1x PBS buffer with 0.09 % (w/v) sodium azide and 2 % sucrose.
Preservative:	Sodium azide
Precaution of Use:	This product contains Sodium azide: a POISONOUS AND HAZARDOUS SUBSTANCE which should be handled by trained staff only.
Handling Advice:	Avoid repeat freeze-thaw cycles.
Storage:	-20 °C
Storage Comment:	For short term use, store at 2-8°C up to 1 week. For long term storage, store at -20°C in small aliquots to prevent freeze-thaw cycles.



Host: Rabbit  
Target Name: SLC7A8  
Sample Tissue: 293T Cell Lysate  
Antibody Dilution: 1.0µg/ml

**Western Blotting**

**Image 1.** Host: Rabbit Target Name: SLC7A8 Sample Tissue: Human 293T Whole Cell Antibody Dilution: 1 ug/ml