

Datasheet for ABIN2792079  
**anti-PAPD5 antibody (C-Term)**[Go to Product page](#)

## 1 Image

## Overview

Quantity:	100 µL
Target:	PAPD5
Binding Specificity:	C-Term
Reactivity:	Human, Mouse, Rat, Cow, Dog, Horse, Guinea Pig
Host:	Rabbit
Clonality:	Polyclonal
Conjugate:	This PAPD5 antibody is un-conjugated
Application:	Western Blotting (WB)

## Product Details

Immunogen:	The immunogen is a synthetic peptide directed towards the C-terminal region of Human PAPD5
Sequence:	SSSKGFQGTQ TSHGSLMTN KQHKGKSNNQ YYHGKKRKHK RDAPLSDLCR
Predicted Reactivity:	Cow: 100%, Dog: 100%, Guinea Pig: 100%, Horse: 100%, Human: 100%, Mouse: 92%, Rat: 100%
Characteristics:	This is a rabbit polyclonal antibody against PAPD5. It was validated on Western Blot.
Purification:	Affinity Purified

## Target Details

Target:	PAPD5
Alternative Name:	PAPD5 ( <a href="#">PAPD5 Products</a> )
Background:	PAPD5 plays a role in replication-dependent histone mRNA degradation. It may be involved in

## Target Details

the terminal uridylation of mature histone mRNAs before their degradation is initiated. DNA polymerase, probably involved in DNA repair. It may play a role in sister chromatid cohesion.  
Protein Interaction Partner: ELAVL1, ZCCHC7,  
Protein Size: 698

Molecular Weight: 76 kDa

Gene ID: 64282

## Application Details

Application Notes: Optimal working dilution should be determined by the investigator.

Restrictions: For Research Use only

## Handling

Format: Liquid

Concentration: 1 mg/mL

Buffer: Liquid. Purified antibody supplied in 1x PBS buffer with 0.09 % (w/v) sodium azide and 2 % sucrose.

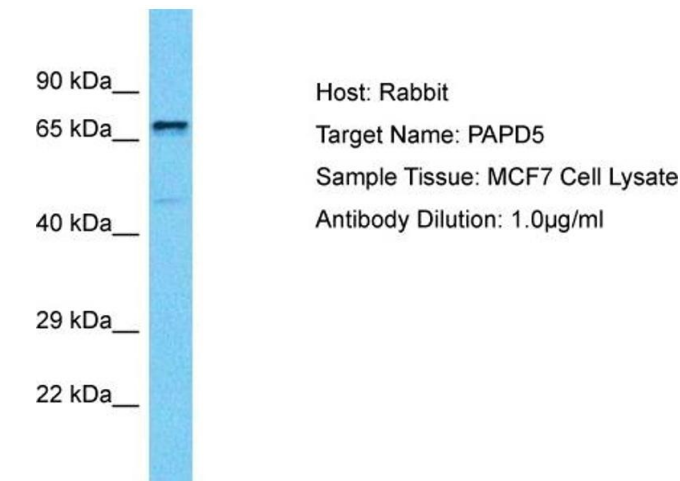
Preservative: Sodium azide

Precaution of Use: This product contains Sodium azide: a POISONOUS AND HAZARDOUS SUBSTANCE which should be handled by trained staff only.

Handling Advice: Avoid repeat freeze-thaw cycles.

Storage: -20 °C

Storage Comment: For short term use, store at 2-8°C up to 1 week. For long term storage, store at -20°C in small aliquots to prevent freeze-thaw cycles.



Western Blotting

**Image 1.** Host: Rabbit Target Name: PAPD5 Sample  
Tissue: Human MCF7 Whole Cell Antibody Dilution: 1ug/ml