

Datasheet for ABIN2792081
anti-POLR1C antibody (N-Term)



[Go to Product page](#)

1 Image

Overview

Quantity:	100 µL
Target:	POLR1C
Binding Specificity:	N-Term
Reactivity:	Human, Mouse, Rat, Cow, Guinea Pig, Rabbit, Dog, Goat, Horse, Zebrafish (Danio rerio)
Host:	Rabbit
Clonality:	Polyclonal
Conjugate:	This POLR1C antibody is un-conjugated
Application:	Western Blotting (WB)

Product Details

Immunogen:	The immunogen is a synthetic peptide directed towards the N-terminal region of human POLR1C
Sequence:	VRNVHTTDFP GNYSGYDDAW DQDRFEKNFR VDVVHMDENS LEFDMVGIDA
Predicted Reactivity:	Cow: 100%, Dog: 100%, Goat: 93%, Guinea Pig: 100%, Horse: 100%, Human: 100%, Mouse: 86%, Rabbit: 100%, Rat: 100%, Zebrafish: 82%
Characteristics:	This is a rabbit polyclonal antibody against POLR1C. It was validated on Western Blot.
Purification:	Affinity Purified

Target Details

Target:	POLR1C
---------	--------

Target Details

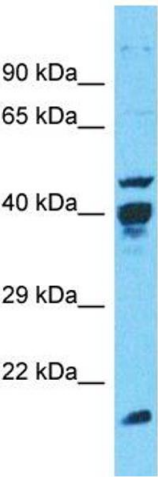
Alternative Name:	POLR1C (POLR1C Products)
Background:	<p>The protein encoded by this gene is a subunit of both RNA polymerase I and RNA polymerase III complexes. The encoded protein is part of the Pol core element. Mutations in this gene have been associated with Treacher Collins syndrome (TCS) and hypomyelinating leukodystrophy 11. Alternative splicing results in multiple transcript variants.</p> <p>Alias Symbols: AC40, RPA5, TCS3, RPA39, RPA40, RPAC1, RPC40</p> <p>Protein Size: 140</p>
Molecular Weight:	15 kDa
Gene ID:	9533
NCBI Accession:	NM_203290 , NP_976035
UniProt:	O15160

Application Details

Application Notes:	Optimal working dilution should be determined by the investigator.
Restrictions:	For Research Use only

Handling

Format:	Liquid
Concentration:	1 mg/mL
Buffer:	Liquid. Purified antibody supplied in 1x PBS buffer with 0.09 % (w/v) sodium azide and 2 % sucrose.
Preservative:	Sodium azide
Precaution of Use:	This product contains Sodium azide: a POISONOUS AND HAZARDOUS SUBSTANCE which should be handled by trained staff only.
Handling Advice:	Avoid repeat freeze-thaw cycles.
Storage:	-20 °C
Storage Comment:	For short term use, store at 2-8°C up to 1 week. For long term storage, store at -20°C in small aliquots to prevent freeze-thaw cycles.



Host: Rabbit
Target Name: POLR1C
Sample Tissue: Jurkat Cell Lysate
Antibody Dilution: 1.0µg/ml

Western Blotting

Image 1. Host: Rabbit Target Name: POLR1C Sample Type: Jurkat Whole Cell lysates Antibody Dilution: 1.0ug/ml