

Datasheet for ABIN2792084

**anti-KBTBD11 antibody (Middle Region)**[Go to Product page](#)**1** Image

## Overview

Quantity:	100 µL
Target:	KBTBD11
Binding Specificity:	Middle Region
Reactivity:	Human, Mouse, Cow, Guinea Pig, Rat
Host:	Rabbit
Clonality:	Polyclonal
Conjugate:	This KBTBD11 antibody is un-conjugated
Application:	Western Blotting (WB)

## Product Details

Immunogen:	The immunogen is a synthetic peptide directed towards the middle region of Human KBTBD11
Sequence:	LGPAGERAGS RPQSPSGDAD ARGDAAVYCF HAAAGEWREL TRLPEGAPAR
Predicted Reactivity:	Cow: 79%, Guinea Pig: 93%, Human: 100%, Mouse: 86%, Rat: 86%
Characteristics:	This is a rabbit polyclonal antibody against KBTBD11. It was validated on Western Blot.
Purification:	Affinity Purified

## Target Details

Target:	KBTBD11
Alternative Name:	KBTBD11 ( <a href="#">KBTBD11 Products</a> )
Background:	The function of this protein remains unknown.

## Target Details

Alias Symbols: KLHDC7C  
Protein Interaction Partner: UBC,  
Protein Size: 623

Molecular Weight: 70 kDa

Gene ID: 9920

NCBI Accession: [NM\\_014867](#), [NP\\_055682](#)

UniProt: [O94819](#)

## Application Details

Application Notes: Optimal working dilution should be determined by the investigator.

Restrictions: For Research Use only

## Handling

Format: Liquid

Concentration: 1 mg/mL

Buffer: Liquid. Purified antibody supplied in 1x PBS buffer with 0.09 % (w/v) sodium azide and 2 % sucrose.

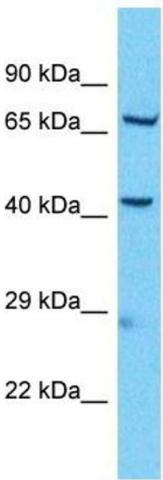
Preservative: Sodium azide

Precaution of Use: This product contains Sodium azide: a POISONOUS AND HAZARDOUS SUBSTANCE which should be handled by trained staff only.

Handling Advice: Avoid repeat freeze-thaw cycles.

Storage: -20 °C

Storage Comment: For short term use, store at 2-8°C up to 1 week. For long term storage, store at -20°C in small aliquots to prevent freeze-thaw cycles.



Host: Rabbit  
Target Name: KBTBD11  
Sample Tissue: Jurkat Cell Lysate  
Antibody Dilution: 1.0µg/ml

Western Blotting

**Image 1.** Host: Rabbit Target Name: KBTBD11 Sample Type: Jurkat Whole Cell lysates Antibody Dilution: 1.0ug/ml