

Datasheet for ABIN2792088  
**anti-KRT15 antibody (C-Term)**[Go to Product page](#)

4 Images

1 Publication

## Overview

Quantity:	100 µL
Target:	KRT15
Binding Specificity:	C-Term
Reactivity:	Human, Mouse, Cow
Host:	Rabbit
Clonality:	Polyclonal
Conjugate:	This KRT15 antibody is un-conjugated
Application:	Western Blotting (WB), Immunohistochemistry (IHC)

## Product Details

Immunogen:	The immunogen is a synthetic peptide directed towards the C terminal region of human KRT15
Sequence:	RSLLLEGQDAK MAGIGIREAS SGGGGSSSNF HINVEESVDG QVVSSHKREI
Predicted Reactivity:	Cow: 86%, Human: 100%, Mouse: 86%
Characteristics:	This is a rabbit polyclonal antibody against KRT15. It was validated on Western Blot and immunohistochemistry.
Purification:	Affinity Purified

## Target Details

Target:	KRT15
Alternative Name:	KRT15 ( <a href="#">KRT15 Products</a> )

## Target Details

Background:	<p>The protein encoded by KRT15 is a member of the keratin gene family. The keratins are intermediate filament proteins responsible for the structural integrity of epithelial cells and are subdivided into cytokeratins and hair keratins. Most of the type I cytokeratins consist of acidic proteins which are arranged in pairs of heterotypic keratin chains and are clustered in a region on chromosome 17q21.2. The protein encoded by this gene is a member of the keratin gene family. The keratins are intermediate filament proteins responsible for the structural integrity of epithelial cells and are subdivided into cytokeratins and hair keratins. Most of the type I cytokeratins consist of acidic proteins which are arranged in pairs of heterotypic keratin chains and are clustered in a region on chromosome 17q21.2. Publication Note: This RefSeq record includes a subset of the publications that are available for this gene. Please see the Entrez Gene record to access additional publications.</p> <p>Alias Symbols: CK15, K15, K1CO</p> <p>Protein Interaction Partner: MBD3, NUP54, AMOTL2, SPG21, WAC, CYTH4, PRPF31, ARFIP2, ZFYVE26, OIP5, HMG20B, ABI2, CEP57, CREB5, HGS, USP2, LMO4, TMSB4X, SMARCE1, RAD51D, PSMB1, PSMA1, PKN1, PIK3R2, NEFL, MOS, LMO2, KRT86, KRT8, KRT6B, KRT6A, KRT5, KRT4, KIFC3, GFAP, TIMM8A, COX5B, CC</p> <p>Protein Size: 456</p>
-------------	---

Molecular Weight:	49 kDa
-------------------	--------

Gene ID:	3866
----------	------

NCBI Accession:	<a href="#">NM_002275</a> , <a href="#">NP_002266</a>
-----------------	---

UniProt:	<a href="#">P19012</a>
----------	------------------------

## Application Details

Application Notes:	Optimal working dilutions should be determined experimentally by the investigator.
--------------------	--

Comment:	Antigen size: 456 AA
----------	----------------------

Restrictions:	For Research Use only
---------------	-----------------------

## Handling

Format:	Liquid
---------	--------

Concentration:	Lot specific
----------------	--------------

Buffer:	Liquid. Purified antibody supplied in 1x PBS buffer with 0.09 % (w/v) sodium azide and 2 % sucrose.
---------	---

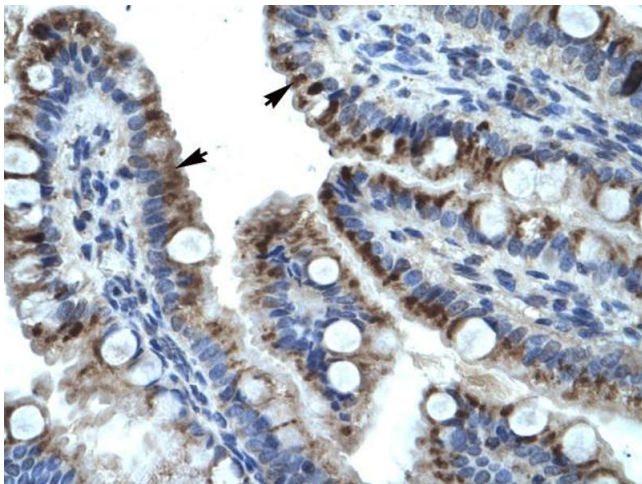
## Handling

Preservative:	Sodium azide
Precaution of Use:	This product contains Sodium azide: a POISONOUS AND HAZARDOUS SUBSTANCE which should be handled by trained staff only.
Handling Advice:	Avoid repeated freeze-thaw cycles.
Storage:	-20 °C
Storage Comment:	For short term use, store at 2-8°C up to 1 week. For long term storage, store at -20°C in small aliquots to prevent freeze-thaw cycles.

## Publications

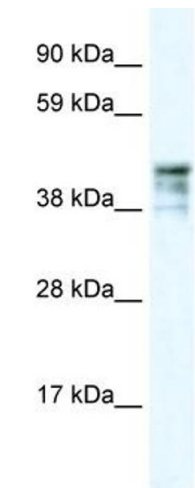
Product cited in:	Suen, Uddin, Prow, Bowen, Hall, Bielefeldt-Ohmann: "Tissue-specific transcription profile of cytokine and chemokine genes associated with flavivirus control and non-lethal neuropathogenesis in rabbits." in: <b>Virology</b> , Vol. 494, pp. 1-14, (2016) ( <a href="#">PubMed</a> ).
-------------------	---

## Images



### Immunohistochemistry

**Image 1.** WB Suggested Anti-KRT15 Antibody Titration: 4.0-8.0 Positive Control: Human Intestine



Western Blotting

**Image 2.** WB Suggested Anti-KRT15 Antibody Titration: 0.2-1 ug/ml ELISA Titer: 1:62500 Positive Control: Human brain



Western Blotting

**Image 3.** WB Suggested Anti-KRT15 antibody Titration: 1 ug/mL Sample Type: Human Hela

Please check the [product details page](#) for more images. Overall 4 images are available for ABIN2792088.