

Datasheet for ABIN2792090
anti-NME1 antibody (N-Term)[Go to Product page](#)

6 Images

Overview

Quantity:	100 µL
Target:	NME1
Binding Specificity:	N-Term
Reactivity:	Human, Mouse, Rat, Cow, Horse, Rabbit, Guinea Pig
Host:	Rabbit
Clonality:	Polyclonal
Conjugate:	This NME1 antibody is un-conjugated
Application:	Western Blotting (WB), Immunohistochemistry (IHC), Dot Blot (DB)

Product Details

Immunogen:	The immunogen is a synthetic peptide directed towards the N terminal region of human NME1
Sequence:	ANCERTFIAI KPDGVQRGLV GEIIKRFEQK GFRLVGLKFM QASEDLLKEH
Predicted Reactivity:	Cow: 100%, Guinea Pig: 92%, Horse: 100%, Human: 100%, Mouse: 100%, Rabbit: 100%, Rat: 100%
Characteristics:	This is a rabbit polyclonal antibody against NME1. It was validated on Western Blot using a cell lysate as a positive control.
Purification:	Affinity Purified

Target Details

Target:	NME1
---------	------

Target Details

Alternative Name: NME1 ([NME1 Products](#))

Background: This gene (NME1) was identified because of its reduced mRNA transcript levels in highly metastatic cells. Nucleoside diphosphate kinase (NDK) exists as a hexamer composed of 'A' (encoded by this gene) and 'B' (encoded by NME2) isoforms. Mutations in this gene have been identified in aggressive neuroblastomas. Two transcript variants encoding different isoforms have been found for this gene. Co-transcription of this gene and the neighboring downstream gene (NME2) generates naturally-occurring transcripts (NME1-NME2), which encodes a fusion protein comprised of sequence sharing identity with each individual gene product. This gene (NME1) was identified because of its reduced mRNA transcript levels in highly metastatic cells. Nucleoside diphosphate kinase (NDK) exists as a hexamer composed of 'A' (encoded by this gene) and 'B' (encoded by NME2) isoforms. Mutations in this gene have been identified in aggressive neuroblastomas. Two transcript variants encoding different isoforms have been found for this gene. Co-transcription of this gene and the neighboring downstream gene (NME2) generates naturally-occurring transcripts (NME1-NME2), which encodes a fusion protein comprised of sequence sharing identity with each individual gene product.

Alias Symbols: AWD, GAAD, NDPKA, NM23, NM23-H1, NB, NBS, NDKA, NDPK-A

Protein Interaction Partner: SREK1IP1, PID1, TNPO2, POLR1C, NME4, NME3, NME1, TUBG1, UBC, MDM2, ASB18, BMI1, CHRA1, NME1-NME2, WDR1, THOP1, SORD, RBBP7, OXCT1, IDH1, FDPS, MAPK14, FBXO6, WDYHV1, NIF3L1, SOX30, FXR2, SMARCD1, NME2, CCND3, UROD, SOD1, MIF, ERG, EBNA-LP, HDAC5, STRAP,

Protein Size: 152

Molecular Weight: 17 kDa

Gene ID: 4830

NCBI Accession: [NM_000269](#), [NP_000260](#)

UniProt: [P22392](#)

Pathways: [Apoptosis](#), [Nucleotide Phosphorylation](#), [Carbohydrate Homeostasis](#), [Ribonucleoside Biosynthetic Process](#)

Application Details

Application Notes: Optimal working dilutions should be determined experimentally by the investigator.

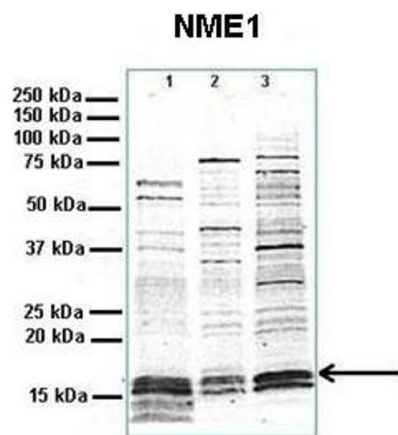
Comment: Antigen size: 152 AA

Restrictions: For Research Use only

Handling

Format:	Liquid
Concentration:	Lot specific
Buffer:	Liquid. Purified antibody supplied in 1x PBS buffer with 0.09 % (w/v) sodium azide and 2 % sucrose.
Preservative:	Sodium azide
Precaution of Use:	This product contains Sodium azide: a POISONOUS AND HAZARDOUS SUBSTANCE which should be handled by trained staff only.
Handling Advice:	Avoid repeated freeze-thaw cycles.
Storage:	-20 °C
Storage Comment:	For short term use, store at 2-8°C up to 1 week. For long term storage, store at -20°C in small aliquots to prevent freeze-thaw cycles.

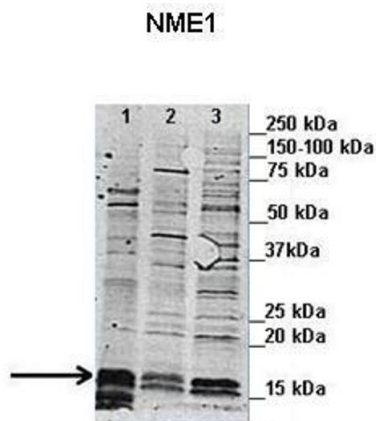
Images



See Immunoblot 2 Data and Customer Feedback for more Information

Western Blotting

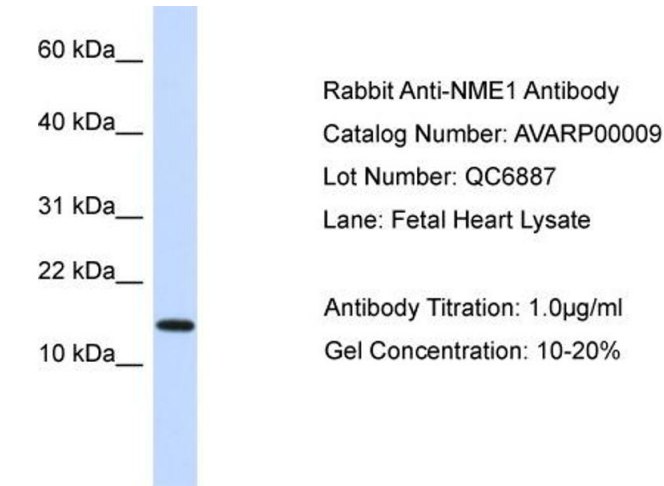
Image 1. Lanes: 1. 20 ug murine 4T1 primary breast tumor cell lysate 2. 20 ug human MDA-MB-231 cell lysate 3. 20 ug murine 4T1 primary breast tumor cell lysate Primary Antibody Dilution: 1:4000 Secondary Antibody: Goat anti-rabbit-Alexa Fluor 680 Secondary Antibody Dilution: 1:25,000 Gene Name: NME1 Submitted by: Anonymous



See Immunoblot 2 Data and Customer Feedback for more Information

Western Blotting

Image 2. Lanes: 1. 20 ug murine 4T1 primary breast tumor cell lysate 2. 20 ug human MDA-MB-231 cell lysate 3. 20 ug murine 4T1 primary breast tumor cell lysate Primary Antibody Dilution: 1:2000 Secondary Antibody: Goat anti-rabbit-Alexa Fluor 680 Secondary Antibody Dilution: 1:25,000 Gene Name: NME1 Submitted by: Anonymous



Western Blotting

Image 3. NME1 antibody - N-terminal region (AV) validated by WB using Fetal Heart Lysate at 1ug/ml.

Please check the [product details page](#) for more images. Overall 6 images are available for ABIN2792090.